



THE BOOK
—•—
2016

Detpak

DETPAK IS A MEMBER
OF THE DETMOLD GROUP,
A SPECIALIST PAPER
AND BOARD PACKAGING
MANUFACTURER
FOUNDED IN 1948
IN ADELAIDE, SOUTH
AUSTRALIA. TODAY
THE GROUP HAS A
WORLDWIDE NETWORK
WITH SEVEN FACTORIES
AND MULTIPLE SALES
OFFICES THROUGHOUT
AUSTRALIA, NEW
ZEALAND, ASIA, SOUTH
AFRICA, THE MIDDLE EAST,
AMERICA AND EUROPE.

BAKERY & PATISSERIE / 4

CAFE & COFFEE / 6

QUICK SERVICE / 8

VENUES & CATERING / 10

INNOVATION / 12

SUSTAINABILITY / 14

CUSTOM PRINT / 18

CUPS & CUP ACCESSORIES / 20

BAGS / 34

WRAPS / 44

CARTONS & TRAYS / 46

NAPKINS / 58

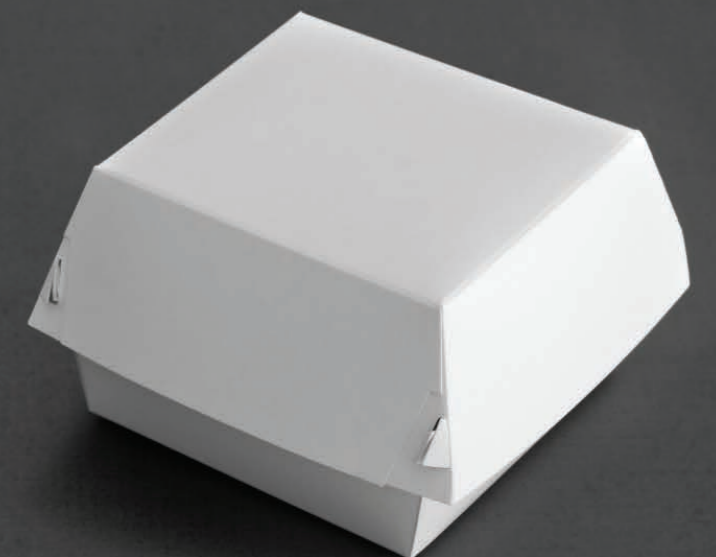
GETTING STARTED / 60

INDEX / 66

INDEX

EAT.
DRINK.
BE MERRY.
A PERFECT
PACKAGE.

DETPAK'S RANGE OF
PACKAGING SOLUTIONS
WILL SHOWCASE YOUR
PRODUCTS, GROW YOUR
BRAND AND SUPPORT
YOUR BUSINESS.





BAKERY &
PATISSERIE

FOOD IS AN EXPERIENCE
THAT STARTS LONG BEFORE
WE TAKE THE FIRST BITE.
OUR SENSES RESPOND TO
THE SIGHTS AND SMELLS
OF DELICIOUS FOOD AND
INCREASE OUR ENJOYMENT.

Detpak's bakery and patisserie range is designed to extend this experience for your customers. Bread stays deliciously crusty, intricate icing is protected in transit and muffins can be easily admired through our product windows. Your customers will get the full experience, well after your food has left the store.

200 YEARS IN THE MAKING
Cupcakes have evolved around the world since 1876 when they appeared in the first American cookbook. Inspired by the popularity of cupcakes, Detpak's cupcake range includes interchangeable, separate cupcake holders that fit neatly into a single box. Simple and effective, this design has the added benefit of packing flat to reduce storage requirements in-store.

WHAT YOU SEE IS WHAT YOU GET
The widely used window retail bags are becoming more popular with Detpak customers searching for a more sustainable packaging solution. The window displays the food products on the shelf for customers to see what they are buying while the brown kraft offers a more natural packaging look. The retail window bags are widely used by Detpak customers for cookies, doughnuts and museli, as well as many other products.



BREAD BAGS p42



WINDOW PATISSERIE RANGE p56



CUPCAKE RANGE p56



FLAT AND SACHEL BAGS p37



DELI-WRAP™ p45



RIPPLE-WRAP™ HOT CUPS p22



CARRY BAGS p36



RETAIL WINDOW BAGS p37



LUNCHEON NAPKINS p59



CAFE &
COFFEE

JUST LIKE THE PERFECT COFFEE, OUR PACKAGING BRINGS TOGETHER SCIENCE AND ART. DETPAK'S CAFE AND COFFEE RANGES OVERCOME THE MANY TECHNICAL CHALLENGES OF INSULATION, MAINTAINING FRESHNESS AND SUSTAINABILITY, WITHOUT COMPROMISING ON BEAUTIFUL DESIGN.

Our range of cup insulation options help coffee to stay at the perfect temperature while keeping your customer's hands cool. For customers wanting the perfect at-home coffee experience, Detpak's self-standing retail bags with resealable tin tie will keep beans fresher for longer.

COFFEE IS SERIOUS BUSINESS

We consume more than three kilos of coffee beans per person each year – that's around 500 single shot espressos and a lot of coffee cups. Detpak has been leading the take-away coffee cup market since introducing the paper and board Ripple-Wrap™ hot cup in 1999. This ground breaking product includes a corrugated outer wrap that creates air pockets to improve insulation, keeping consumers' hands cooler.

HOT AND COLD

Flexibility is an important quality in any business. Detpak offers a variety of packaging options, including the Uni-cup. The multi-purpose Uni-cup has been painstakingly designed to perform well with both hot and cold products, so you can switch easily from soup to salad.



RIPPLE-WRAP™ HOT CUPS p22



I AM ECO™ HOT CUPS p21



SINGLE WALL HOT CUPS p24



THE BOSS CUP™ p23



DRINK TRAYS p31



RETAIL BAGS p36



WINDOW LUNCH BOXES p48



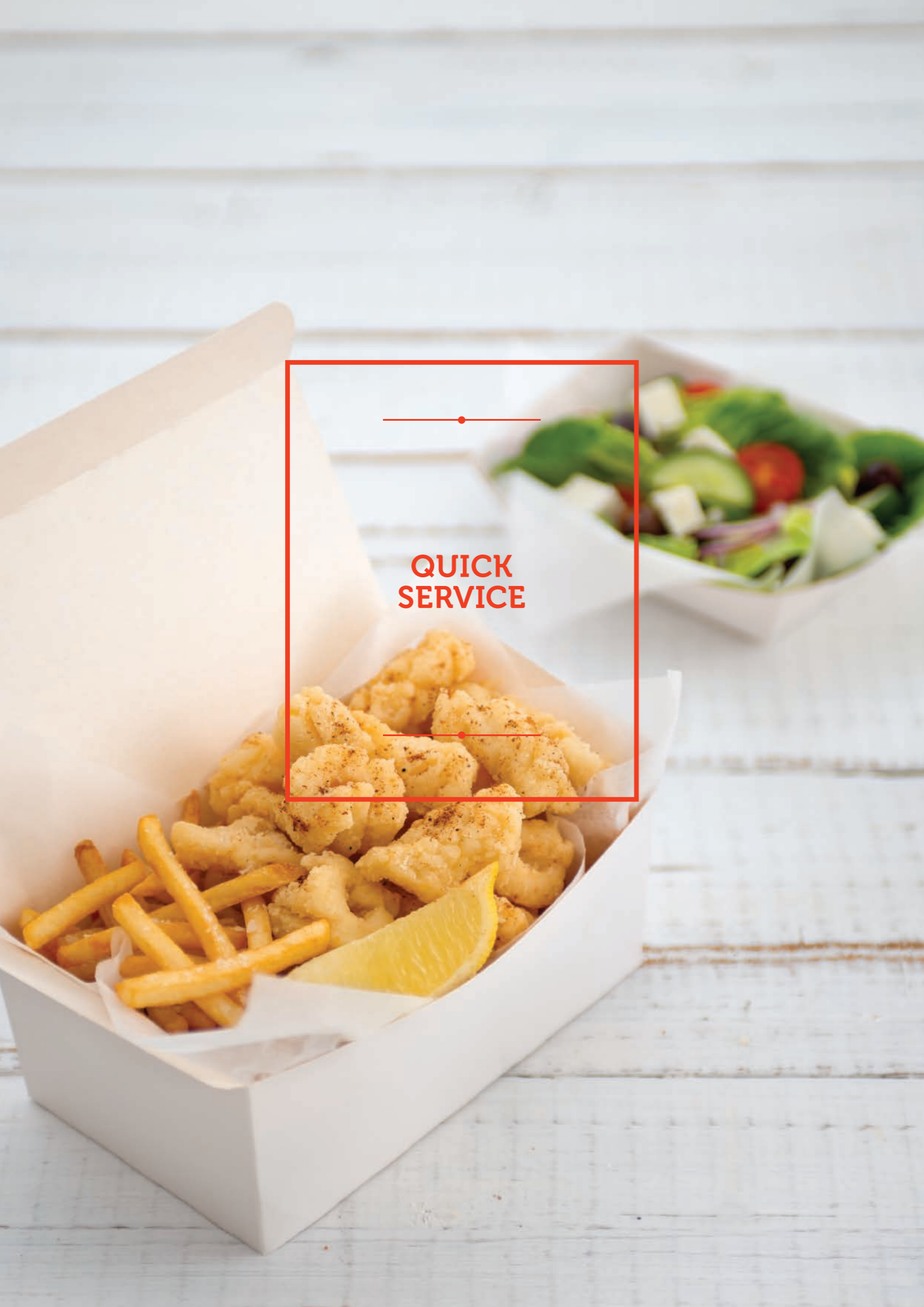
SANDWICH WEDGES p53



UNI-CUPS p27



TAKE-AWAY BAGS p35



QUICK SERVICE

FAST FOOD: WHEN EVERY SECOND COUNTS FOR YOUR CUSTOMER. QUICK SERVICE AND TAKE-AWAY RESTAURANTS FACE PARTICULAR CHALLENGES AND OPPORTUNITIES WITH PACKAGING.

A customer's experience with your food begins with the packaging and first impressions count. Fast throughput often means no time to spare on presentation, so food integrity and looks can suffer. Detpak's cost-effective quick service range is designed to maintain the integrity of your food within easy-to-assemble packaging. Fast service, good looks – great impression.

WHEN TWO BECOME ONE

Pail-Paks™ are a beautiful way to present premium food products and are a modern alternative to plastic containers. Pail-Paks™ have an in-built lid, which eliminates the need to stock and store two packaging pieces in your store – saving space and time. Their innovative design also allows for simple and rapid filling as they stand open on the benchtop for easy access. Pail-Paks™ are easy to carry and great for branding.

'70s ICON STILL PERFORMING

Detpak first started manufacturing waxed burger wraps in the 1970s for McDonald's: a recent entrant into the Australian market at that time. These burger wraps, with a thick layer of wax on one side, are ideal for juicy burgers. This market has expanded since then and Detpak is now the largest manufacturer of waxed wraps in the Asia Pacific region.



COLD CUPS p30



SNACK BOXES p50



CHIP CARTONS p51



BURGER CLAMS p52



ENDURA RANGE p54



TAKE-AWAY BAGS p35



BURGER WRAPS p45



QUICK SERVICE BAGS p41



PAIL-PAK™ p49



GREASEPROOF FLAT BAGS p41



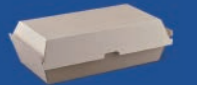
VENUES & CATERING

STRONG AND STURDY PACKAGING SOLUTIONS STAND OUT IN A CROWD. DETPAK'S VENUES AND CATERING RANGE INCLUDES PRODUCTS THAT ARE TOUGH, DESIGNED TO HOLD A WIDE VARIETY OF FOODS AND ARE EASY FOR YOUR CUSTOMERS TO ACCESS AND CARRY.

Pre-formed products help to save preparation time, and a range of linings make many of our products suitable for hot or cold foods. This dual functionality and versatility pays off in ease of use and decreased storage needs onsite. Recyclable products, and products made with materials from sustainable sources, are a key feature of this range. Detpak can support sustainability at large scale events, without any compromise in quality.

HALF-TIME HEROES
Large public gatherings like music festivals or sporting events often require extremely fast service. More than 1250 people per minute can be looking for refreshments during lunch at the cricket – and that's just half the capacity crowd of the Melbourne Cricket Ground. Detpak's pre-formed food trays help you to package and serve food quickly. With a range of linings designed to handle greasy products we can ensure each individual customer has the best experience possible, regardless of crowd size.

CHAIRMAN OF THE BOARD
Detpak's Endura range is made of tough stuff. Its unique fluted board, a corrugated piece of board between two sheets of paper, gives it structure and the strength to withstand a battering at busy events. Its design also allows it to cope well with grease and oil. Even better, it is 100% renewable and sustainable which makes it a great environmental choice.



ENDURA RANGE p54



I AM ECO™ HOT CUPS p21



FOOD TRAYS p52



FOOD PAILS p47



COLD CUPS p30



FOOD CONE p51



PAPER PLATES p53



CARRY PACKS p51



NAPKINS p59



SAVOURY BOWLS p28



INNOVATION

1 DAY TO LAUNCH

LAUNCHPAD IS DETPAK'S CENTRE FOR CONCEPT CREATION AND RAPID PROTOTYPING THAT OFFERS LIGHTNING-FAST TURNAROUND TIME AND MAXIMUM INNOVATION. COME TO US WITH A PACKAGING GOAL IN MIND AND MEET WITH OUR TEAM OF EXPERTS – WITHIN ONE DAY WE WILL DESIGN AND CREATE YOUR PROTOTYPE. IT'S THAT SIMPLE. MORE THAN 18 MONTHS WORTH OF R&D BROUGHT TO YOU IN ONE DAY: AN AMAZING ADVANTAGE IN A FAST MOVING MARKET.

**OUR COMMITMENT
TO PEOPLE AND THE
ENVIRONMENT.
DETPAK IS DEEPLY
COMMITTED TO
ENVIRONMENTAL AND
SOCIAL RESPONSIBILITY.
FOR US, THIS MEANS
SUPPORTING OUR PEOPLE
AND SUSTAINING
OUR FUTURE.**

PEOPLE

SUPPORTING OUR PEOPLE

Corporate social responsibility is a big phrase for a very simple idea – taking care of the community in which we operate. Detpak is proud to take care of its community and welcomes the regular social accountability audits from many of our global customers. We focus on areas including fair hiring practices; safe working hours; fair compensation and benefits; and workplace safety in all of our manufacturing facilities. Detpak makes sure that its team is paid at, or above, award wages for normal time and overtime, whether they are in Adelaide or Ho Chi Minh City.

We invest in the local communities surrounding our factories through sustainability projects and infrastructure and support many charities, including Ronald McDonald House, the Breast Cancer Council and the Red Cross.

PASSION FOR PAPER

Detpak South Africa is helping a group of entrepreneurs in a struggling community explore their passion for paper. The group is running a hand-made paper bag business that aims to create jobs and a sustainable income for under-privileged people in their area. Detpak has been with the business from the beginning, by helping to fit-out the workspace and purchasing the raw materials needed to get the business going as well as donating paper. Detpak's support is ongoing and we're looking forward to seeing the difference this group can make to their community in Johannesburg.

SMART KIDS, STRONG FUTURE

A Heshan government program in China – Care and Help our Kids – helps teenagers with good academic ability that are experiencing difficulties in life. Detpak is sponsoring a teenager through this program to help him overcome these difficulties and create a brighter future. As a result of our sponsorship and his hard work, the young man is now majoring in Industry and Commerce Management at University and gaining valuable business experience working in the local Detpak factory during his study breaks.



Corn starch is used to make Poly-lactic Acid (PLA), a compostable bio-film used in the Detpak's I am eco™ range instead of regular plastic.

DETPAK'S ENVIRONMENTAL PHILOSOPHY



ENVIRONMENT

SUSTAINING OUR FUTURE

Our approach to the environment is all-encompassing. To have a true environmental focus we must work on all of these stages in unison, and constantly strive for improvements and innovations in order to sustain our future.

SUSTAINABLE RAW MATERIALS

Detpak assesses everything that goes into manufacturing our products for its environmental impact. Detpak only uses paper and board from large, reputable raw material suppliers – meaning no old growth forests are used. As part of our commitment to sustainable sourcing, our manufacturing arm Detmold Packaging now has PEFC and FSC accreditation across all its manufacturing plants globally. We keep the use of inks and adhesives to a minimum and we also prioritise the use of water-based and soy inks. These are more environmentally friendly than solvent based inks as they use less non-renewable resources.

RESPONSIBLE MANUFACTURING PRACTICES

We continually assess our manufacturing practices to make our processing as sustainable as possible. We minimise our inputs where possible which includes reducing our use of power and our use of solvent based inks and adhesives. We also maximise the re-use of production set-up materials. Detpak takes into account its own level of packaging and we minimise the amount of outer packaging on all of our products to customers. Our waste is always disposed of in line with Environmental Protection Agency (EPA) approved practices.

PACKAGING CHOICES

Many of the options in the Detpak range are environmentally friendly because they are based on paper or board – a renewable resource. We also offer the I am eco™ range of products, which uses bio-film rather than traditional plastic lining and is 100% biodegradable. The range of raw material options available to us is continually advancing, and we are actively investigating and trialling alternate renewable materials to give our customers more choice. We assess these products with a view to being both highly functional and environmentally sustainable. Our team can guide you through product comparisons to meet your specific environmental and packaging objectives.

END OF LIFE DISPOSAL

Detpak works with waste management and resource recovery stakeholders to develop increasingly sustainable options for product disposal, including diverting products into new recycling streams. Detpak was also one of the first signatories to the Australian Packaging Covenant, an initiative that encourages businesses to reduce the environmental impacts of consumer packaging. Detpak is proactive in meeting its obligations under the covenant and we promote resource efficient packaging design; the recovery and recycling of used packaging; and reducing the incidence and impact of litter. The Detpak team can advise you on the best packaging options to suit your disposal or recycling needs.

ENVIRONMENTAL CHECKPOINT

To assist you in making a selection that is mindful of the environment we have rated each of our products throughout this catalogue against 4 key environmental criteria.



SUSTAINABLE

The paper or board material used in this product is sourced from responsible forestry, and the supplier has been audited for evidence of sustainable and ethical forestry practices.



COMPOSTABLE

This product is biodegradable and compostable, and suitable for treatment in a commercial facility where it will break down within 90 days as defined by EU standard EN13432.



RECYCLABLE

This product can be readily recycled via kerbside recycling bins once food residue is cleaned off of the product.



I AM ECO™ RANGE

Detpak's I am eco™ range of products uses bio-film rather than traditional plastic lining and is 100% biodegradable and compostable.

Sugar cane is being used to make a new material called bagasse.



CONTENTS

INDEX



CUSTOM PRINT

BRANDING MEANS BUSINESS

THE BIGGEST BRANDS IN THE WORLD CHOOSE US FOR THEIR BRANDED PACKAGING. THEY KNOW THAT IF THEIR BRANDED PACKAGING INSPIRES AND INFLUENCES THEIR CUSTOMERS, THEIR BOTTOM LINE WILL BENEFIT. ALL OF DETPAK'S PRODUCTS CAN BE CUSTOM PRINTED TO STRENGTHEN YOUR BRAND AND HELP YOU STAND OUT FROM THE CROWD. WITH OVER 65 YEARS OF EXPERIENCE IN SUPERIOR DESIGN AND PRINTING ACROSS A RANGE OF PRODUCTS, YOU CAN TRUST DETPAK TO BUILD YOUR BRAND AND YOUR BUSINESS.

[CONTENTS](#)

[INDEX](#)



CUPS & CUP
ACCESSORIES

CONTENTS

INDEX

CUPS & CUP ACCESSORIES

TEL: AUSTRALIA 1300 362 620 / NEW ZEALAND 0800 338 725

I AM ECO™ HOT CUPS



- Made with a bio-film lining based on Polylactic Acid (PLA) – a starch from plants.
- 100% compostable and biodegradable.

VOLUME CHART

Size	Capacity
4oz	118ml
6oz	200ml
7oz	205ml
8oz	240ml
8oz Combo	250ml
8oz Squat	300ml
12oz	360ml
12oz Combo	365ml
16oz	480ml
16oz Combo	440ml
20oz	600ml

LEGEND

- SUSTAINABLE
- COMPOSTABLE
- RECYCLABLE



CONTENTS

INDEX

CUPS & CUP ACCESSORIES

TEL: AUSTRALIA 1300 362 620 / NEW ZEALAND 0800 338 725

RIPPLE-WRAP™ HOT CUPS



- Corrugated wrap keeps hands cool and the coffee hot.
- Ideal for very hot drinks including coffee and tea.



4oz ESPRESSO RIPPLE-WRAP™
Item: R147S0015 Design: Brown
Diameter: 62mm Qty/Ctn: 1000



8oz RIPPLE-WRAP™
Item: R604S0015 Design: Brown
Diameter: 80mm Qty/Ctn: 1000



12oz RIPPLE-WRAP™
Item: R368S0015 Design: Brown
Diameter: 89mm Qty/Ctn: 1000



16oz RIPPLE-WRAP™
Item: R292S0015 Design: Brown
Diameter: 89mm Qty/Ctn: 500



20oz RIPPLE-WRAP™
Item: R596S0015 Design: Brown
Diameter: 89mm Qty/Ctn: 500



4oz ESPRESSO RIPPLE-WRAP™
Item: R147S0029 Design: Black
Diameter: 62mm Qty/Ctn: 1000



8oz RIPPLE-WRAP™
Item: R604S0029 Design: Black
Diameter: 80mm Qty/Ctn: 1000



12oz RIPPLE-WRAP™
Item: R368S0029 Design: Black
Diameter: 89mm Qty/Ctn: 1000



16oz RIPPLE-WRAP™
Item: R292S0029 Design: Black
Diameter: 89mm Qty/Ctn: 500



4oz ESPRESSO RIPPLE-WRAP™
Item: R147S0001 Design: White
Diameter: 62mm Qty/Ctn: 1000



8oz RIPPLE-WRAP™
Item: R604S0001 Design: White
Diameter: 80mm Qty/Ctn: 1000



12oz RIPPLE-WRAP™
Item: R368S0001 Design: White
Diameter: 89mm Qty/Ctn: 1000



16oz RIPPLE-WRAP™
Item: R292S0001 Design: White
Diameter: 89mm Qty/Ctn: 500



8oz RIPPLE-WRAP™
Item: R604S0049 Design: Red
Diameter: 80mm Qty/Ctn: 1000



12oz RIPPLE-WRAP™
Item: R368S0049 Design: Red
Diameter: 89mm Qty/Ctn: 1000



16oz RIPPLE-WRAP™
Item: R292S0049 Design: Red
Diameter: 89mm Qty/Ctn: 500



8oz RIPPLE-WRAP™
Item: R604S0020 Design: Classic
Diameter: 80mm Qty/Ctn: 1000



12oz RIPPLE-WRAP™
Item: R368S0020 Design: Classic
Diameter: 89mm Qty/Ctn: 1000



16oz RIPPLE-WRAP™
Item: R292S0020 Design: Classic
Diameter: 89mm Qty/Ctn: 500

CONTENTS

INDEX

CUPS & CUP ACCESSORIES

TEL: AUSTRALIA 1300 362 620 / NEW ZEALAND 0800 338 725

COMBO RIPPLE-WRAP™ HOT CUPS



- This range has 1 lid that fits all 3 sizes.
- Corrugated wrap keeps hands cool and the coffee hot.



8oz COMBO RIPPLE-WRAP™
Item: R258S0029 Design: Black
Diameter: 86mm Qty/Ctn: 960



12oz COMBO RIPPLE-WRAP™
Item: R157S0029 Design: Black
Diameter: 86mm Qty/Ctn: 800



16oz COMBO RIPPLE-WRAP™
Item: R248S0029 Design: Black
Diameter: 86mm Qty/Ctn: 500

COMBO SMOOTH DOUBLE WALL HOT CUPS



- This range has 1 lid that fits all 3 sizes.
- Cardboard outer wall provides insulation against heat.



8oz COMBO SMOOTH DOUBLE WALL
Item: R192S0029 Design: Black
Diameter: 86mm Qty/Ctn: 500



12oz COMBO SMOOTH DOUBLE WALL
Item: R124S0029 Design: Black
Diameter: 86mm Qty/Ctn: 500



16oz COMBO SMOOTH DOUBLE WALL
Item: R125S0029 Design: Black
Diameter: 86mm Qty/Ctn: 300

SMOOTH DOUBLE WALL HOT CUPS



- Cardboard outer wall provides insulation against heat.
- Smooth glossy finish.



8oz SMOOTH DOUBLE WALL
Item: R554S0020 Design: Brown Classic
Diameter: 80mm Qty/Ctn: 1000



12oz SMOOTH DOUBLE WALL
Item: R576S0020 Design: Brown Classic
Diameter: 89mm Qty/Ctn: 1000



16oz SMOOTH DOUBLE WALL
Item: R018S0020 Design: Brown Classic
Diameter: 89mm Qty/Ctn: 500

THE BOSS CUP™



- The new Boss Cup™ has a modern embossed panel design creating air pillows to ensure your coffee is hot - not your fingers.
- One-lid-fits-all solution for convenience and minimal storage.



8oz SQUAT BOSS CUP™
Item: R633S0010 Design: Brown
Diameter: 89mm Qty/Ctn: 1000



12oz BOSS CUP™
Item: R830S0010 Design: Brown
Diameter: 89mm Qty/Ctn: 1000



16oz BOSS CUP™
Item: R704S0010 Design: Brown
Diameter: 89mm Qty/Ctn: 500

CUPS & CUP ACCESSORIES

TEL: AUSTRALIA 1300 362 620 / NEW ZEALAND 0800 338 725

SINGLE WALL HOT CUPS



- Economical hot cup option.
- Stamp or sticker the large smooth sides for a quick and easy branding option.



CONTENTS

INDEX

CUPS & CUP ACCESSORIES

TEL: AUSTRALIA 1300 362 620 / NEW ZEALAND 0800 338 725

COMBO SINGLE WALL HOT CUPS



- This range has 1 lid that fits all 3 sizes.
- Economical hot cup option.
- Stamp or sticker the large smooth sides for a quick and easy branding option.



8oz COMBO SINGLE WALL
Item: R280S0015 Design: Brown
Diameter: 86mm Qty/Ctn: 500



12oz COMBO SINGLE WALL
Item: R261S0015 Design: Brown
Diameter: 86mm Qty/Ctn: 500



16oz COMBO SINGLE WALL
Item: R276S0015 Design: Brown
Diameter: 86mm Qty/Ctn: 300



8oz COMBO SINGLE WALL
Item: R280S0029 Design: Black
Diameter: 86mm Qty/Ctn: 500

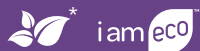


12oz COMBO SINGLE WALL
Item: R261S0029 Design: Black
Diameter: 86mm Qty/Ctn: 500



16oz COMBO SINGLE WALL
Item: R276S0029 Design: Black
Diameter: 86mm Qty/Ctn: 300

HOT CUP LIDS



- Fits non-combo and Boss Cup™ ranges.
- Spout design is excellent for 'on the go' consumption.
- Buttons to assist the barista and consumer: white, cino, latte, mocha.
- Smooth Lid for barista's that like to write the customer's name.
- Compostable lids for I am eco™ hot cups.

* Applies to Eco Lids.



8oz ECO LID
Item: V507S0001 Design: White
Fits: 80mm cup Qty/Ctn: 1000



12 / 16oz ECO LID
Item: V139S0001 Design: White
Fits: 89 mm cup Qty/Ctn: 1000



4oz LID
Item: V942S9525 Design: White
Fits: 62mm cup Qty/Ctn: 1000



6oz LID
Item: V752S0001 Design: White
Fits: 71mm cup Qty/Ctn: 2000



6oz LID
Item: V752S0029 Design: Black
Fits: 71mm cup Qty/Ctn: 2000



8oz BUTTON LID
Item: V053S0001 Design: White
Fits: 80mm cup Qty/Ctn: 1000



12 / 16 / 20oz BUTTON LID
Item: V051S0001 Design: White
Fits: 89mm cup Qty/Ctn: 1000



8oz BUTTON LID
Item: V053S0029 Design: Black
Fits: 80mm cup Qty/Ctn: 1000



12 / 16 / 20oz BUTTON LID
Item: V051S0029 Design: Black
Fits: 89mm cup Qty/Ctn: 1000

Volume Chart: 4oz-118ml | 6oz-200ml | 7oz-205ml | 8oz-240ml | 8oz Combo-250ml | 8oz Squat-300ml | 12oz-360ml | 12oz Combo-365ml | 16oz-480ml | 16oz Combo-440ml | 20oz-600ml

CONTENTS

INDEX

CUPS & CUP ACCESSORIES

TEL: AUSTRALIA 1300 362 620 / NEW ZEALAND 0800 338 725

HOT CUP LIDS

PRODUCTS CONTINUED



8oz SPOUT LID
Item: V543S0001 Design: White
Fits: 80mm cup Qty/Ctn: 1000



12 / 16 / 20oz SPOUT LID
Item: V150S0001 Design: White
Fits: 89mm cups Qty/Ctn: 1000



8oz SPOUT LID
Item: V543S0029 Design: Black
Fits: 80mm cup Qty/Ctn: 1000



12 / 16 / 20oz SPOUT LID
Item: V150S0029 Design: Black
Fits: 89mm cups Qty/Ctn: 1000



8oz SMOOTH LID
Item: V784S0001 Design: White
Fits: 80mm cup Qty/Ctn: 1000



12 / 16 / 20oz SMOOTH LID
Item: V668S0001 Design: White
Fits: 89mm cups Qty/Ctn: 1000



8oz SMOOTH LID
Item: V784S0029 Design: Black
Fits: 80mm cup Qty/Ctn: 1000



12 / 16 / 20oz SMOOTH LID
Item: V668S0029 Design: Black
Fits: 89mm cups Qty/Ctn: 1000

COMBO HOT CUP LIDS

- The Combo lid fits all the Combo Ripple-Wrap™, Combo Smooth Double Wall and Combo Single Wall hot cup ranges providing a one lid fits all system



COMBO 8 / 12 / 16oz LID
Item: V302S0001 Design: White
Fits: 86mm cup Qty/Ctn: 1000



COMBO 8 / 12 / 16oz LID
Item: V302S0029 Design: Black
Fits: 86mm cup Qty/Ctn: 1000

NEW

CONTENTS

INDEX

CUPS & CUP ACCESSORIES

TEL: AUSTRALIA 1300 362 620 / NEW ZEALAND 0800 338 725

UNI-CUP RANGE



- Great for hot soups as well as fruit salad and yoghurt.
- Sturdy leak-proof one-size-fits-all lid.

* These enviro statements do not apply to V271S0001 lid.



8oz RIPPLE-WRAP™
Item: U081S0015 Design: Brown
Volume: 240ml Qty/Ctn: 500



12oz RIPPLE-WRAP™
Item: U264S0015 Design: Brown
Volume: 360ml Qty/Ctn: 500



16oz RIPPLE-WRAP™
Item: U372S0015 Design: Brown
Volume: 480ml Qty/Ctn: 500



8oz SINGLE WALL
Item: U296S0001 Design: White
Volume: 240ml Qty/Ctn: 500



12oz SINGLE WALL
Item: U048S0001 Design: White
Volume: 360ml Qty/Ctn: 500



16oz SINGLE WALL
Item: U250S0001 Design: White
Volume: 480ml Qty/Ctn: 500



8 / 12 / 16oz LID
Item: V271S0001 Design: White
Fits: 8/12/16oz Uni-Cups Qty/Ctn: 500

I AM ECO™ BOWLS



- Great for salads, fruit salad, yoghurts and cereals.
- Bowl Material: paperboard with bioplastic lining (PLA).
- Bowl Lid Material: bioplastic (PLA).



8oz PAPER ECO BOWL
Item: N700S0229 Design: I am eco™
Volume: 240ml Qty/Ctn: 1000



12oz PAPER ECO BOWL
Item: N701S0229 Design: I am eco™
Volume: 360ml Qty/Ctn: 500



16oz PAPER ECO BOWL
Item: N702S0229 Design: I am eco™
Volume: 480ml Qty/Ctn: 500



24oz PAPER ECO BOWL
Item: N703S0229 Design: I am eco™
Volume: 715ml Qty/Ctn: 500



8oz PLA Lid
Item: V350S0001 Design: Opaque
Fits: 8oz bowl Qty/Ctn: 1000



12 / 16 / 24oz PLA Lid
Item: V375S0001 Design: Opaque
Fits: 12/16/24oz bowl Qty/Ctn: 500

CONTENTS

INDEX

CUPS & CUP ACCESSORIES

TEL: AUSTRALIA 1300 362 620 / NEW ZEALAND 0800 338 725

ICE CREAM BOWLS



- Bowls can be matched with dome lids for immediate consumption, or flat lids for take home options.
- Bowls in sizes from 12oz-24oz have one lid fit for storage convenience.
- Also great for yogurt, fruit salad and desserts.
- This range is also freezer safe.



3oz ICE CREAM BOWL
Item: N647S0260 Design: Glacier
Diameter: 70mm Qty/Ctn: 1000
Volume: 90ml



5oz ICE CREAM BOWL
Item: N735S0260 Design: Glacier
Diameter: 86mm Qty/Ctn: 1000
Volume: 150ml



8oz ICE CREAM BOWL
Item: N825S0260 Design: Glacier
Diameter: 95mm Qty/Ctn: 1000
Volume: 240ml



12oz ICE CREAM BOWL
Item: N899S0260 Design: Glacier
Diameter: 114mm Qty/Ctn: 500
Volume: 360ml



16oz ICE CREAM BOWL
Item: N745S0260 Design: Glacier
Diameter: 114mm Qty/Ctn: 500
Volume: 470ml



24oz ICE CREAM BOWL
Item: N876S0260 Design: Glacier
Diameter: 114mm Qty/Ctn: 500
Volume: 710ml

SAVOURY BOWLS



- Great for all sorts of foods including soups, salads, pasta, noodles, rice and hot snacks like popcorn.
- Bowls can be matched with dome lids for immediate consumption, or flat lids for take home options.
- Bowls in sizes from 12oz-24oz have a one-lid-fit for storage convenience.
- This range is also freezer safe.



12oz SAVOURY BOWL
Item: N899S0259 Design: Harvest
Diameter: 114mm Qty/Ctn: 500
Volume: 360ml



16oz SAVOURY BOWL
Item: N745S0259 Design: Harvest
Diameter: 114mm Qty/Ctn: 500
Volume: 470ml



24oz SAVOURY BOWL
Item: N876S0259 Design: Harvest
Diameter: 114mm Qty/Ctn: 500
Volume: 710ml



32oz SAVOURY BOWL
Item: N636S0259 Design: Harvest
Diameter: 140mm Qty/Ctn: 500
Volume: 950ml

CONTENTS

INDEX

CUPS & CUP ACCESSORIES

TEL: AUSTRALIA 1300 362 620 / NEW ZEALAND 0800 338 725

WHITE BOWLS



- Great for all sorts of foods including soups, ice-cream, yoghurts, salads, pasta, noodles, rice and hot snacks like popcorn.
- Bowls can be matched with dome lids for immediate consumption, or flat lids for take home options.
- Personalise with stamp or sticker the large smooth sides for a quick and easy branding option.
- This range is also freezer safe.
- Bowls in sizes from 12oz-24oz have a one-lid-fit for storage convenience.



ICE CREAM AND SAVOURY BOWL LIDS



- Dome lids are made with quality PET for high transparency
 - Flat lids are made from PP to withstand heat
- * Applies to Dome PET lids.



CONTENTS

INDEX

CUPS & CUP ACCESSORIES

TEL: AUSTRALIA 1300 362 620 / NEW ZEALAND 0800 338 725

COLD CUPS



- Double poly lining on the inside and outside to protect against condensation.



12oz COLD CUP
Item: S353S0001 Design: White
Volume: 360ml Qty/Ctn: 1000



16oz COLD CUP
Item: S279S0001 Design: White
Volume: 480ml Qty/Ctn: 1000



24oz COLD CUP
Item: S494S0001 Design: White
Volume: 715ml Qty/Ctn: 500



12oz COLD CUP
Item: S353S0022 Design: Igloo
Volume: 360ml Qty/Ctn: 1000



16oz COLD CUP
Item: S279S0022 Design: Igloo
Volume: 480ml Qty/Ctn: 1000



22oz COLD CUP
Item: S225S0022 Design: Igloo
Volume: 660ml Qty/Ctn: 1000



24oz COLD CUP
Item: S494S0022 Design: Igloo
Volume: 715ml Qty/Ctn: 500

COLD CUP LIDS

- Clear colour allows easy viewing of the drink inside.
- Buttons to assist with differentiation during service: diet, other



12oz COLD CUP LID
Item: V281S0064 Design: Opaque
Fits: 12oz cups Qty/Ctn: 1000



16 / 22oz COLD CUP LID
Item: V082S0064 Design: Opaque
Fits: 16/22oz cups Qty/Ctn: 1000



24oz COLD CUP LID
Item: V049S0064 Design: Opaque
Fits: 24oz cup Qty/Ctn: 1000

PET CLEAR COLD CUPS



- Made with quality PET for high transparency.
- The 285ml and 425ml beer cups are 'weights and measures' approved.



8oz CLEAR CUP
Item: T270S0064 Volume: 220ml
Diameter: 78mm Qty/Ctn: 1000



10oz CLEAR CUP
Item: T505S0064 Volume: 300ml
Diameter: 78mm Qty/Ctn: 1000



12oz CLEAR CUP
Item: T244S0064 Volume: 360ml
Diameter: 92mm Qty/Ctn: 1000

CONTENTS

INDEX

CUPS & CUP ACCESSORIES

TEL: AUSTRALIA 1300 362 620 / NEW ZEALAND 0800 338 725

PET CLEAR COLD CUPS

PRODUCTS CONTINUED



16oz CLEAR CUP
Item: T043S0064 Volume: 500ml
Diameter: 98mm Qty/Ctn: 1000



20oz CLEAR CUP
Item: T037S0064 Volume: 580ml
Diameter: 98mm Qty/Ctn: 1000



24oz CLEAR CUP
Item: T064S0064 Volume: 680ml
Diameter: 98mm Qty/Ctn: 600



285ml BEER CUP
Item: T728S0064 Volume: 10oz
Diameter: 78mm Qty/Ctn: 1000

NEW



425ml BEER CUP
Item: T512S0064 Volume: 14oz
Diameter: 93mm Qty/Ctn: 1000

PET CLEAR CUP LIDS



- Made with quality PET for high transparency.



FLAT LID SMALL
Item: V540S0064 Fits: 78mm cup
Qty/Ctn: 2000



FLAT LID MEDIUM
Item: V002S0064 Fits: 92 & 93mm cups
Qty/Ctn: 1000



FLAT LID LARGE
Item: V461S0064 Fits: 98mm cup
Qty/Ctn: 1000



DOME LID SMALL
Item: V975S0064 Fits: 78mm cup
Qty/Ctn: 2000



DOME LID MEDIUM
Item: V136S0064 Fits: 92 & 93mm cups
Qty/Ctn: 1000



DOME LID LARGE
Item: V399S0064 Fits: 98mm cup
Qty/Ctn: 1000

DRINK TRAYS



- Perforated middle allows trays to be split for two drink servings.



4 CUP DRINK TRAY
Item: M283S0010 Design: Brown E-Flute
Size: 292 x 180 x 38 Qty/Ctn: 100



MIGHTY DRINK TRAY
Item: M905S0010 Design: Brown
Size: 198 x 174 x 37 Qty/Ctn: 100

CONTENTS

INDEX

DIGITAL CUPS

*As individual
as you are.*

Introducing Detpak's revolutionary cup capability... high quality photographic print with optional high-build dimensional varnish. With no plate charges and low run quantities starting at 12,000 cups this is the new reality!

STEP 1: CHOOSE YOUR BASE



Ripple-Wrap™
White



Ripple-Wrap™
Brown



Smooth
Double Wall

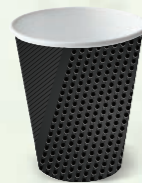
STEP 2: CREATE YOUR DESIGN

With a 300dpi resolution your artwork will be crispier and more realistic than ever before.



STEP 3 OPTIONAL: CHOOSE YOUR EMBELLISHMENT

With a tactile high-build varnish a world of design possibilities opens up.



FOR MORE DETAILS, TO REQUEST SAMPLES OR TO PLACE AN ORDER CONTACT US:
AUSTRALIA 1300 362 620 NEW ZEALAND 0800 338 725 PACKAGING@DETPAK.COM

Detpak

WWW.DETPAK.COM

CONTENTS

INDEX





BAGS

[CONTENTS](#)

[INDEX](#)

BAGS

TEL: AUSTRALIA 1300 362 620 / NEW ZEALAND 0800 338 725

TAKE-AWAY FOOD BAGS



- Holds multiple take-away items.
- Free-standing bag makes it easy to load the product.

LEGEND



SUSTAINABLE



COMPOSTABLE



RECYCLABLE

CHECKOUT BAGS



- Strong heavyweight material for holding multiple items.
- Paper bags are recyclable, compostable and reusable.



4 SOS BAG
Item: C589S0010 Design: Brown
Size: 240 x 127 x 77 Qty/Ctn: 2000



6 SOS BAG
Item: C582S0010 Design: Brown
Size: 273 x 147 x 92 Qty/Ctn: 2000



8 SOS BAG
Item: C243S0010 Design: Brown
Size: 315 x 154 x 100 Qty/Ctn: 1000



NEW

8 HEAVYWEIGHT SOS BAG
Item: C243S0012 Design: Brown
Size: 315 x 154 x 100 Qty/Ctn: 800



12 SOS BAG
Item: C572S0010 Design: Brown
Size: 330 x 178 x 112 Qty/Ctn: 1000



NEW

12 MID-WEIGHT SOS BAG
Item: C572S0011 Design: Brown
Size: 330 x 178 x 112 Qty/Ctn: 600



12 HEAVYWEIGHT SOS BAG
Item: C572S0012 Design: Brown
Size: 330 x 178 x 112 Qty/Ctn: 500



C BAG
Item: C606S0010 Design: Brown
Size: 305 x 215 x 121 Qty/Ctn: 1000



NEW

#20 SLIM SOS BAG
Item: C810S0010 Design: Brown
Size: 450 x 205 x 125 Qty/Ctn: 400



16 SOS BAG
Item: C008S0010 Design: Brown
Size: 380 x 240 x 120 Qty/Ctn: 250



20 SOS BAG
Item: C511S0010 Design: Brown
Size: 430 x 305 x 175 Qty/Ctn: 250



25 SOS BAG
Item: C528S0010 Design: Brown
Size: 540 x 355 x 165 Qty/Ctn: 100



D BAG (DIE-CUT HANDLE)
Item: C040S0010 Design: Brown
Size: 280 x 280 x 150 Qty/Ctn: 500



ECO D BAG
Item: C040S0231 Design: I am eco™
Size: 280 x 280 x 150 Qty/Ctn: 500

CONTENTS

INDEX

BAGS

TEL: AUSTRALIA 1300 362 620 / NEW ZEALAND 0800 338 725

CARRY BAGS



- Paper bags are very strong, holding up to 15kg.
- Recyclable, compostable and reusable.



160 TWIST HANDLE
Item: C493S0010A Design: Brown
Size: 355 x 240 x 120 Qty/Ctn: 200



180 TWIST HANDLE
Item: C210S0010A Design: Brown
Size: 420 x 320 x 110 Qty/Ctn: 250



5 FLAT HANDLE
Item: C060S0010 Design: Brown
Size: 275 x 280 x 150 Qty/Ctn: 200



60 FLAT HANDLE
Item: C209S0010A Design: Brown
Size: 300 x 240 x 100 Qty/Ctn: 250



75 FLAT HANDLE
Item: C167S0010A Design: Brown
Size: 340 x 320 x 145 Qty/Ctn: 250

RETAIL BAGS



- Poly-lined for freshness.
- Easy to seal with a bar heat-sealer, and easy to re-seal with the tin-tie.



250G TIN-TIE BAG
Item: C464S0010 Design: Brown
Size: 235 x 88 x 47 Qty/Ctn: 500



500G TIN-TIE BAG
Item: C559S0010 Design: Brown
Size: 275 x 100 x 60 Qty/Ctn: 500



1KG TIN-TIE BAG
Item: C532S0010 Design: Brown
Size: 327 x 127 x 76 Qty/Ctn: 500



250G TIN-TIE BAG
Item: C464S0001 Design: White
Size: 235 x 88 x 47 Qty/Ctn: 500



500G TIN-TIE BAG
Item: C559S0001 Design: White
Size: 275 x 100 x 60 Qty/Ctn: 500



1KG TIN-TIE BAG
Item: C532S0001 Design: White
Size: 327 x 127 x 76 Qty/Ctn: 500

I AM ECO™ WINDOW RETAIL BAGS



- Lined with Polylactic Acid (PLA) Film – PLA is a starch from plants.
- Compostable in commercial composting facilities once tin-tie removed.



SMALL TIN-TIE BAG
Item: C433S0231 Design: I am eco™
Size: 260 x 88 x 47 Qty/Ctn: 500



MEDIUM TIN-TIE BAG
Item: C469S0231 Design: I am eco™
Size: 246 x 115 x 72 Qty/Ctn: 400



LARGE TIN-TIE BAG
Item: C382S0231 Design: I am eco™
Size: 242 x 155 x 70 Qty/Ctn: 400

CONTENTS

INDEX

BAGS

TEL: AUSTRALIA 1300 362 620 / NEW ZEALAND 0800 338 725

RETAIL WINDOW BAGS



- Poly-lined for freshness.
- Sealable with a bar heat-sealer, and easy to re-seal with the tin-tie.



SMALL BAG
Item: C474S0010 Design: Brown
Size: 260 x 88 x 47 Qty/Ctn: 500



SMALL TIN-TIE BAG
Item: C644S0010 Design: Brown
Size: 260 x 88 x 47 Qty/Ctn: 500



MEDIUM TIN-TIE BAG
Item: C575S0010 Design: Brown
Size: 246 x 115 x 72 Qty/Ctn: 400



LARGE TIN-TIE BAG
Item: C615S0010 Design: Brown
Size: 242 x 155 x 70 Qty/Ctn: 400



SMALL TIN-TIE BAG
Item: C644S0001 Design: White
Size: 260 x 88 x 47 Qty/Ctn: 500



MEDIUM TIN-TIE BAG
Item: C575S0001 Design: White
Size: 246 x 115 x 72 Qty/Ctn: 400



LARGE TIN-TIE BAG
Item: C615S0001 Design: White
Size: 242 x 155 x 70 Qty/Ctn: 400

WHITE FLAT BAGS



- Made with good quality white kraft paper.
- Strung bags can be hung in-store for easy dispensing.



CUTLERY BAG
Item: A217S0001 Design: White
Size: 238 x 83 Qty/Ctn: 1000



22 CONFECTIONERY
Item: A083S0001 Design: White
Size: 133 x 92 Qty/Ctn: 1000



1/4 FLAT (STRUNG)
Item: A367S0001A Design: White
Size: 123 x 116 Qty/Ctn: 4000



1/2 FLAT (STRUNG)
Item: A151S0001A Design: White
Size: 155 x 116 Qty/Ctn: 4000



23 CONFECTIONERY
Item: A574S0001 Design: White
Size: 165 x 116 Qty/Ctn: 2000



1 LONG FLAT (STRUNG)
Item: A141S0001A Design: White
Size: 199 x 147 Qty/Ctn: 4000

CONTENTS

INDEX

BAGS

TEL: AUSTRALIA 1300 362 620 / NEW ZEALAND 0800 338 725

WHITE FLAT BAGS

PRODUCTS CONTINUED



24 CONFECTIONERY
Item: A163S0001 Design: White
Size: 187 x 150 Qty/Ctn: 1000



1 SQUARE FLAT (STRUNG)
Item: A530S0001B Design: White
Size: 187 x 175 Qty/Ctn: 2000



2 LONG FLAT (STRUNG)
Item: A523S0001A Design: White
Size: 237 x 175 Qty/Ctn: 2000



75 FLAT
Item: A361S0001 Design: White
Size: 213 x 175 Qty/Ctn: 1000



2 SQUARE FLAT (STRUNG)
Item: A177S0001A Design: White
Size: 212 x 200 Qty/Ctn: 2000



1 FLAT
Item: A421S0001 Design: White
Size: 238 x 200 Qty/Ctn: 500



3 FLAT (STRUNG)
Item: A421S0001C Design: White
Size: 238 x 200 Qty/Ctn: 2000



2 FLAT
Item: A226S0001 Design: White
Size: 238 x 241 Qty/Ctn: 500



4 FLAT (STRUNG)
Item: A308S0001B Design: White
Size: 269 x 241 Qty/Ctn: 2000



6 FLAT (STRUNG)
Item: A403S0001A Design: White
Size: 346 x 241 Qty/Ctn: 2000



4 SQUARE FLAT (STRUNG)
Item: A251S0001A Design: White
Size: 320 x 273 Qty/Ctn: 1000



6 SQUARE FLAT (STRUNG)
Item: A152S0001A Design: White
Size: 320 x 273 Qty/Ctn: 1000



8 FLAT (STRUNG)
Item: A013S0001A Design: White
Size: 346 x 273 Qty/Ctn: 1000



RECORD BAG
Item: A610S0001 Design: White
Size: 396 x 330 Qty/Ctn: 500

WHITE SACHEL BAGS



- Made with good quality white kraft paper.
- Gusset on the bag allows extra room for bigger items.



1 SACHEL
Item: B533S0001 Design: White
Size: 200 x 95 x 45 Qty/Ctn: 500



2 SACHEL
Item: B228S0001 Design: White
Size: 240 x 115 x 48 Qty/Ctn: 500



SMALL MILLINERY SACHEL
Item: B441S0001 Design: White
Size: 498 x 285 x 80 Qty/Ctn: 250

CONTENTS

INDEX

BAGS

TEL: AUSTRALIA 1300 362 620 / NEW ZEALAND 0800 338 725

BROWN FLAT BAGS



- Made with good quality brown kraft paper.
- Strung bags can be hung in-store for easy dispensing.



24 FLAT
Item: A163S0010 Design: Brown
Size: 187 x 150 Qty/Ctn: 1000



1 SQUARE FLAT (STRUNG)
Item: A530S0010B Design: Brown
Size: 187 x 175 Qty/Ctn: 2000



2 FLAT (STRUNG)
Item: A523S0010A Design: Brown
Size: 237 x 175 Qty/Ctn: 2000



75 FLAT
Item: A361S0010 Design: Brown
Size: 213 x 175 Qty/Ctn: 1000



2 SQUARE FLAT (STRUNG)
Item: A177S0010A Design: Brown
Size: 212 x 200 Qty/Ctn: 2000



1 FLAT
Item: A421S0010 Design: Brown
Size: 238 x 200 Qty/Ctn: 500



3 FLAT (STRUNG)
Item: A421S0010B Design: Brown
Size: 238 x 200 Qty/Ctn: 2000



1 CANTEEN PRINT
Item: A421S0201 Design: Canteen
Size: 238 x 200 Qty/Ctn: 500



2.5 FLAT
Item: A112S0010 Design: Brown
Size: 269 x 241 Qty/Ctn: 500



4 FLAT (STRUNG)
Item: A308S0010A Design: Brown
Size: 269 x 241 Qty/Ctn: 2000



6 FLAT (STRUNG)
Item: A571S0010B Design: Brown
Size: 346 x 241 Qty/Ctn: 2000



4 SQUARE FLAT (STRUNG)
Item: A152S0010B Design: Brown
Size: 320 x 273 Qty/Ctn: 1000



8 FLAT (STRUNG)
Item: A013S0010B Design: Brown
Size: 346 x 273 Qty/Ctn: 1000



6 FLAT
Item: A182S0010 Design: Brown
Size: 371 x 310 Qty/Ctn: 250

CONTENTS

INDEX

BAGS

TEL: AUSTRALIA 1300 362 620 / NEW ZEALAND 0800 338 725

BROWN SATCHEL BAGS



- Made with good quality brown kraft paper.
- Gusset on the bag allows extra room for bigger items.



1 BROWN
Item: B533S0010 Design: Brown
Size: 200 x 95 x 45 Qty/Ctn: 500



1 BROWN HEAVYWEIGHT
Item: B533S0013 Design: Brown
Size: 200 x 95 x 45 Qty/Ctn: 500



2 BROWN
Item: B228S0010 Design: Brown
Size: 240 x 115 x 48 Qty/Ctn: 500



4 BROWN
Item: B186S0010 Design: Brown
Size: 295 x 125 x 77 Qty/Ctn: 500



6 BROWN
Item: B609S0010 Design: Brown
Size: 346 x 150 x 85 Qty/Ctn: 500



8 BROWN
Item: B557S0010 Design: Brown
Size: 384 x 150 x 85 Qty/Ctn: 500

GLASSINE FLAT BAGS



- Glassine bags are ideal for products that are steamy and greasy, such as dim sims.



1 SQUARE GLASSINE (STRUNG)
Item: A231S0001 Design: Glassine
Size: 187 x 165 Qty/Ctn: 500



2 SQUARE GLASSINE (STRUNG)
Item: A071S0001 Design: Glassine
Size: 219 x 200 Qty/Ctn: 500



3 GLASSINE (STRUNG)
Item: A012S0001 Design: Glassine
Size: 238 x 200 Qty/Ctn: 500

GLASSINE SATCHEL BAGS



- Glassine bags are ideal for products that are steamy and greasy, such as hot dogs.



1 GLASSINE
Item: B378S0001 Design: Glassine
Size: 200 x 95 x 45 Qty/Ctn: 500



2 GLASSINE
Item: B605S0001 Design: Glassine
Size: 240 x 115 x 48 Qty/Ctn: 500



HOT DOG BAG GLASSINE
Item: B434S0001 Design: Glassine
Size: 240 x 95 x 45 Qty/Ctn: 1000



HOT DOG BAG GLASSINE
Item: B434S0023 Design: Hot 'n Tasty
Size: 240 x 95 x 45 Qty/Ctn: 1000

CONTENTS

INDEX

BAGS

TEL: AUSTRALIA 1300 362 620 / NEW ZEALAND 0800 338 725

GREASEPROOF FLAT BAGS (2-PLY)



- The inner ply is grease-proof paper, making these bags an excellent choice for greasy fried foods.



1/2 LONG GPL (STRUNG)
Item: A476S0010 Design: Brown/GR
Size: 156 x 117 Qty/Ctn: 500



1/2 SQUARE GPL BROWN (STRUNG)
Item: A366S0010 Design: Brown/GR
Size: 156 x 140 Qty/Ctn: 500



1 SQUARE GPL BROWN (STRUNG)
Item: A230S0010 Design: Brown/GR
Size: 195 x 178 Qty/Ctn: 500



2 SQUARE GPL BROWN (STRUNG)
Item: A551S0010 Design: Brown/GR
Size: 213 x 200 Qty/Ctn: 500



25 GREASE RESISTANT BAG (1 PLY)
Item: A301S0001 Design: GR 1 ply
Size: 200 x 137 Qty/Ctn: 1000



25 GPL BAG
Item: A413S0001 Design: White/GR
Size: 200 x 137 Qty/Ctn: 500



#1/2 SQUARE GPL BAG
Item: A366S0001 Design: White/GR
Size: 156 x 140 Qty/Ctn: 500



75 GPL BAG
Item: A057S0001 Design: White/GR
Size: 213 x 175 Qty/Ctn: 500



1 SQUARE GPL WHITE (STRUNG)
Item: A230S0001 Design: White/GR
Size: 195 x 178 Qty/Ctn: 500



2 LONG GPL WHITE (STRUNG)
Item: A526S0001A Design: White/GR
Size: 243 x 178 Qty/Ctn: 500



2 SQUARE GPL WHITE (STRUNG)
Item: A551S0001 Design: White/GR
Size: 213 x 200 Qty/Ctn: 500



#1 GPL LONG
Item: A121S0001 Design: White/GR
Size: 238 x 200 Qty/Ctn: 250

QUICK SERVICE BAGS



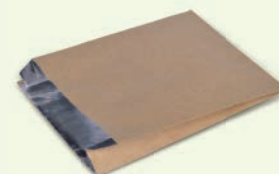
- Foil lined bags protect against grease and oil, whilst retaining heat.
- Poly-lined bags hold very juicy chickens, and can be microwaved.



MINI FOIL CHICKEN BAG
Item: B074S0010 Design: Brown
Size: 220 x 165 x 56 Qty/Ctn: 250



X-LARGE FOIL CHICKEN BAG
Item: B515S0010 Design: Brown
Size: 310 x 165 x 63 Qty/Ctn: 250



JUMBO FOIL CHICKEN BAG
Item: B011S0010 Design: Brown
Size: 310 x 180 x 73 Qty/Ctn: 250

CONTENTS

INDEX

BAGS

TEL: AUSTRALIA 1300 362 620 / NEW ZEALAND 0800 338 725

QUICK SERVICE BAGS

PRODUCTS CONTINUED



MINI FOIL CHICKEN BAG
Item: B074S0001 Design: Plain
Size: 220 x 167 x 56 Qty/Ctn: 250



LARGE FOIL CHICKEN BAG
Item: B363S0001 Design: Plain
Size: 310 x 167 x 56 Qty/Ctn: 250



LARGE FOIL CHICKEN BAG
Item: B363S0026
Design: Fresh 'n' Tasty Chicken
Size: 310 x 167 x 56 Qty/Ctn: 250



X-LARGE FOIL CHICKEN BAG
Item: B515S0026
Design: Fresh 'n' Tasty Chicken
Size: 310 x 167 x 63 Qty/Ctn: 250



JUMBO FOIL CHICKEN BAG
Item: B011S0026
Design: Fresh 'n' Tasty Chicken
Size: 310 x 180 x 73 Qty/Ctn: 250



CHICKEN BAG (POLY LAM)
Item: B433S0199
Design: Hot Chicken Tasty Tender
Size: 340 x 167 x 77 Qty/Ctn: 500



HOT ROLL FOIL BAG
Item: B022S0048 Design: Hot Roll
Size: 320 x 115 x 45 Qty/Ctn: 500

BREAD BAGS



• Large viewing window to show off your bread product.

* Enviro statements apply if windows are removed.



LOAF WINDOW BAG
Item: B293S0019 Design: Brown-Wheat
Size: 390 x 140 x 70 Qty/Ctn: 500



LARGE FRENCH STICK WINDOW BAG
Item: B132S0019 Design: Brown-Wheat
Size: 710 x 100 x 60 Qty/Ctn: 500



COB WINDOW BAG
Item: B207S0019 Design: Brown-Wheat
Size: 390 x 200 x 110 Qty/Ctn: 500



EXTRA LARGE BREAD BAG
Item: B033S0001 Design: White
Size: 396 x 203 x 108 Qty/Ctn: 500



BAGUETTE WINDOW BAG
Item: B471S0001 Design: White
Size: 390 x 100 x 35 Qty/Ctn: 400

CONTENTS

INDEX

BAGS

TEL: AUSTRALIA 1300 362 620 / NEW ZEALAND 0800 338 725

BOTTLE BAGS



- Ideally sized for a great fit on bottles.
- High Wet Strength (HWS) option provides durability against condensation on chilled bottles.



SINGLE BOTTLE BAG
Item: B044S0010 Design: Brown
Size: 390 x 95 x 50 Qty/Ctn: 500



DOUBLE BOTTLE BAG
Item: B524S0010 Design: Brown
Size: 396 x 150 x 85 Qty/Ctn: 500



DOUBLE BOTTLE BAG
Item: B468S0010 Design: HWS
Size: 396 x 150 x 85 Qty/Ctn: 500



TRIPLE BOTTLE BAG
Item: B154S0010 Design: HWS
Size: 396 x 229 x 82 Qty/Ctn: 250



1 LITRE BOTTLE BAG
Item: B318S0010 Design: Brown
Size: 390 x 115 x 48 Qty/Ctn: 500

SPECIALTY BAGS



- High Wet Strength (HWS) option provides durability against condensation on chilled products.
- Motion Sickness bag is leak-proof due to the poly-lining.

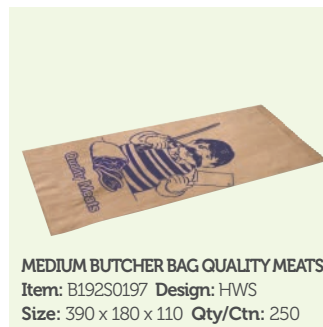
* B065S0001 is sustainable only.



AUST MUSH GROWERS ASSOC (STRUNG)
Item: B140S0196A Design: HWS
Size: 269 x 163 x 80 Qty/Ctn: 2000



AUST MUSH GROWERS ASSOC (STRUNG)
Item: B196S0196A Design: Brown
Size: 269 x 163 x 80 Qty/Ctn: 2000



MEDIUM BUTCHER BAG QUALITY MEATS
Item: B192S0197 Design: HWS
Size: 390 x 180 x 110 Qty/Ctn: 250



MOTION SICKNESS SACHEL
Item: B065S0001 Design: White (Poly Lam)
Size: 260 x 167 x 77 Qty/Ctn: 1000

CONTENTS

INDEX



WRAPS

[CONTENTS](#)

[INDEX](#)

WRAPS

TEL: AUSTRALIA 1300 362 620 / NEW ZEALAND 0800 338 725

DELI-WRAP™



- Light wax coverage on both sides of the wrap.
- Breathable and resistant to condensation.
- Ideal for sandwiches and baked goods.

LEGEND



SUSTAINABLE



COMPOSTABLE



RECYCLABLE



SMALL PICK-UP SHEET (DISPENSER)
Item: F324S0001 Design: White
Size: 178 x 165 Qty/Ctn: 20,000
Inner Qty: 1000



LARGE PICK-UP SHEET (DISPENSER)
Item: F408S0001 Design: White
Size: 198 x 198 Qty/Ctn: 20,000
Inner Qty: 1000



SMALL DELI-WRAP™ (DISPENSER)
Item: F443S0001 Design: White
Size: 200 x 330 Qty/Ctn: 5000
Inner Qty: 1000



MEDIUM DELI-WRAP™ (DISPENSER)
Item: F322S0001 Design: White
Size: 380 x 247 Qty/Ctn: 5000
Inner Qty: 1000



LARGE DELI-WRAP™ (DISPENSER)
Item: F325S0001 Design: White
Size: 400 x 330 Qty/Ctn: 3000
Inner Qty: 1000



LARGE DELI-WRAP™ (DISPENSER)
Item: F325S0033 Design: Fresh Delicious
Size: 400 x 330 Qty/Ctn: 3000
Inner Qty: 1000

BURGER WRAP



- White tissue paper with either a wax or foil-laminated layer on one side.
- Excellent grease resistance.
- Ideal for burgers and kebabs.

* F304S0039 is sustainable only.



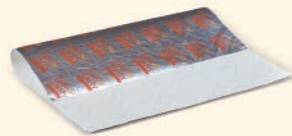
SMALL BROWN WRAP
Item: F178S0010 Design: Plain
Size: 330 x 305 Qty/Ctn: 2000
Inner Qty: 2000



MEDIUM BROWN WRAP
Item: F120S0010 Design: Plain
Size: 380 x 330 Qty/Ctn: 2000
Inner Qty: 2000



MEDIUM WAXED WRAP
Item: F120S0039 Design: Fresh 'n' Tasty
Size: 380 x 330 Qty/Ctn: 3000
Inner Qty: 1000



SMALL FOIL LAMINATED
Item: F304S0039 Design: Fresh 'n' Tasty
Size: 330 x 300 Qty/Ctn: 2000
Inner Qty: 1000

FRESH WRAP



- Heavyweight paper with a poly-laminated layer.
- Superior barrier to grease and moisture.
- Ideal for meat, fish and small goods.



LARGE FRESH WRAP
Item: F066S0035 Design: Italian
Size: 400 x 330 Qty/Ctn: 1500

WRAPPA-ROLL™



- Pre-applied sticker is a more user-friendly solution than fiddly napkins or equivalent.
- Offers a time efficient, safe solution to cutting paper into strips.
- Grease resistant paper allows breads to breathe.



WRAPPA-ROLL™
Item: F586S0001 Design: White
Size: 380 x 75 Qty/Ctn: 6000
Inner Qty: 1500

CONTENTS

INDEX



CONTENTS

INDEX

CARTONS & TRAYS

TEL: AUSTRALIA 1300 362 620 / NEW ZEALAND 0800 338 725

FOOD PAILS



- Poly-lined meaning it's fit for saucy foods and salad dressings.
- Free standing with built-in lid for quick and easy filling.

LEGEND



SUSTAINABLE



COMPOSTABLE



RECYCLABLE



8oz PAIL
Item: L009S0001 Size: 62 x 46 x 66
Volume: 240ml Qty/Ctn: 450



16oz PAIL
Item: L343S0001 Size: 76 x 55 x 85
Volume: 477ml Qty/Ctn: 450



26oz PAIL
Item: L100S0001 Size: 79 x 66 x 103
Volume: 775ml Qty/Ctn: 450



32oz PAIL
Item: L513S0001 Size: 89 x 69 x 110
Volume: 954ml Qty/Ctn: 450



8oz PAIL - WIRE HANDLE
Item: L510S0001 Size: 62 x 46 x 66
Volume: 240ml Qty/Ctn: 450



16oz PAIL - WIRE HANDLE
Item: L229S0001 Size: 76 x 55 x 85
Volume: 477ml Qty/Ctn: 450



26oz PAIL - WIRE HANDLE
Item: L358S0001 Size: 79 x 66 x 103
Volume: 775ml Qty/Ctn: 450



32oz PAIL - WIRE HANDLE
Item: L565S0001 Size: 89 x 69 x 110
Volume: 954ml Qty/Ctn: 450

I AM ECO™ PAILS



- Material: bagasse sugarcane board with bioplastic lining (PLA)



16oz ECO PAIL
Item: L624S0229 Design: I am eco™
Size: 76 x 55 x 85 Qty/Ctn: 450



26oz ECO PAIL
Item: L660S0229 Design: I am eco™
Size: 79 x 66 x 103 Qty/Ctn: 450



32oz ECO PAIL
Item: L675S0229 Design: I am eco™
Size: 89 x 69 x 110 Qty/Ctn: 450

CONTENTS

INDEX

CARTONS & TRAYS

TEL: AUSTRALIA 1300 362 620 / NEW ZEALAND 0800 338 725

LUNCH BOXES



- Poly-lined meaning it's fit for saucy foods and salad dressings.
- Hinged lid enables quick filling, and easy access by consumers.



SMALL LUNCH BOX
Item: L333S0010 Size: 150 x 100 x 45
Volume: 700ml Qty/Ctn: 200



MEDIUM LUNCH BOX
Item: L105S0010 Size: 180 x 120 x 50
Volume: 1100ml Qty/Ctn: 200



LARGE LUNCH BOX
Item: L193S0010 Size: 195 x 140 x 65
Volume: 1900ml Qty/Ctn: 200



EX-SMALL LUNCH BOX
Item: L436S0001 Size: 120 x 88 x 37
Volume: 400ml Qty/Ctn: 200



SMALL LUNCH BOX
Item: L333S0001 Size: 150 x 100 x 45
Volume: 700ml Qty/Ctn: 200



MEDIUM LUNCH BOX
Item: L105S0001 Size: 180 x 120 x 50
Volume: 1100ml Qty/Ctn: 200



LARGE LUNCH BOX
Item: L193S0001 Size: 195 x 140 x 65
Volume: 1900ml Qty/Ctn: 200

WINDOW LUNCH BOXES



- Poly-lined meaning it's fit for saucy foods and salad dressings.
- Large viewing window for premium presentation of your food.



EX-SMALL WINDOW LUNCH BOX
Item: L323S0010 Size: 120 x 88 x 37
Volume: 400ml Qty/Ctn: 200



SMALL WINDOW LUNCH BOX
Item: L564S0010 Size: 150 x 100 x 45
Volume: 700ml Qty/Ctn: 200



MEDIUM WINDOW LUNCH BOX
Item: L590S0010 Size: 180 x 120 x 50
Volume: 1100ml Qty/Ctn: 200



LARGE WINDOW LUNCH BOX
Item: L552S0010 Size: 195 x 140 x 65
Volume: 1900ml Qty/Ctn: 200



EX-SMALL WINDOW LUNCH BOX
Item: L323S0001 Size: 120 x 88 x 37
Volume: 400ml Qty/Ctn: 200



SMALL WINDOW LUNCH BOX
Item: L564S0001 Size: 150 x 100 x 45
Volume: 700ml Qty/Ctn: 200

CONTENTS

INDEX

CARTONS & TRAYS

TEL: AUSTRALIA 1300 362 620 / NEW ZEALAND 0800 338 725

WINDOW LUNCH BOXES

PRODUCTS CONTINUED



TAKEAWAY BOXES



- Lightweight brown board, so they are a better environmental alternative to plastic.
- The board is made from recycled materials, and with its rustic brown look it suits the eco-conscious.
- Webbed corners and poly lining prevent leaking
- Suitable for saucy takeaway foods,
- Includes a single-clasp lunchbox style lid for easy opening.
- Strong internal flaps mean they are stackable.



PAIL-PAK™



- Poly-lined meaning it's fit for saucy foods and salad dressings.
- Low profile with large opening provides easy access to the food.



CONTENTS

INDEX

CARTONS & TRAYS

TEL: AUSTRALIA 1300 362 620 / NEW ZEALAND 0800 338 725

PAIL-PAK™

PRODUCTS CONTINUED



2 PAIL-PAK™
Item: L075S0001 **Size:** 195 x 140 x 50
Volume: 1073ml **Qty/Ctn:** 200



3 PAIL-PAK™
Item: L496S0001 **Size:** 197 x 139 x 64
Volume: 1669ml **Qty/Ctn:** 100



4 PAIL-PAK™
Item: L096S0001 **Size:** 197 x 139 x 89
Volume: 2146ml **Qty/Ctn:** 100

SNACK BOXES



- Built-in lid avoids the need to hold stock of an additional product.
- Product is packed flat, saving space in store.
- Breathe holes in the Hot Food Fast range help fried foods to stay crispy.



EX-SMALL SNACK BOX (50s)
Item: K480S0247 **Design:** Hot Food Fast
Size: 130 x 103 x 57 **Qty/Ctn:** 500



SMALL SNACK BOX (50s)
Item: K382S0247 **Design:** Hot Food Fast
Size: 172 x 103 x 57 **Qty/Ctn:** 500



MEDIUM SNACK BOX (50s)
Item: K340S0274 **Design:** Hot Food Fast
Size: 172 x 103 x 70 **Qty/Ctn:** 500



LARGE SNACK BOX (50s)
Item: K440S0247 **Design:** Hot Food Fast
Size: 200 x 115 x 70 **Qty/Ctn:** 400



SMALL SNACK BOX (BULK)
Item: K016S0001 **Design:** White
Size: 172 x 103 x 57 **Qty/Ctn:** 500



MEDIUM SNACK BOX (BULK)
Item: K213S0001 **Design:** White
Size: 172 x 103 x 70 **Qty/Ctn:** 500



LARGE SNACK BOX (BULK)
Item: K537S0001 **Design:** White
Size: 200 x 115 x 70 **Qty/Ctn:** 400

CONTENTS

INDEX

CARTONS & TRAYS

TEL: AUSTRALIA 1300 362 620 / NEW ZEALAND 0800 338 725

FISH & CHIP BOXES



- Single side coated board, and breathe holes, enable fried foods to stay crispy.
- Large base flap provides strength for packaging fish fillets.



SMALL FISH & CHIP BOX
Item: K123S0043 Design: Fresh from the Sea
Size: 245 x 90 x 63 Qty/Ctn: 500



MEDIUM FISH & CHIP BOX
Item: K236S0043 Design: Fresh from the Sea
Size: 245 x 95 x 85 Qty/Ctn: 400



LARGE FISH & CHIP BOX
Item: K188S0043 Design: Fresh from the Sea
Size: 250 x 150 x 90 Qty/Ctn: 250

CHIP CARTONS



- Single side coated board, and breathe holes, enable fried foods to stay crispy.
- Broad range allows you to manage portion control.



SMALL CHIP CARTON (50s)
Item: K227S0247 Design: Hot Food Fast
Size: 71 x 71 x 105 Qty/Ctn: 500



LARGE CHIP CARTON (50s)
Item: K228S0247 Design: Hot Food Fast
Size: 91 x 91 x 135 Qty/Ctn: 500



LARGE RECTANGULAR CHIP CARTON (50s)
Item: K337S0247 Design: Hot Food Fast
Size: 59 x 100 x 151 Qty/Ctn: 500

CARRY PACKS



- Able to hold a number of items for pre-packaged meals, or meal deals.
- Made from sturdy board, with a convenient die-cut carry handle.



MEDIUM CARRY PACK
Item: K394S0001 Design: White
Size: 220 x 115 x 114 Qty/Ctn: 250



LARGE CARRY PACK
Item: K092S0001 Design: White
Size: 254 x 152 x 102 Qty/Ctn: 200



EX-LARGE CARRY PACK
Item: K428S0001 Design: White
Size: 250 x 150 x 175 Qty/Ctn: 200

FOOD CONES



- Easy to hold while standing at events and functions.
- Grease resistant varnish on inside to protect against oil stains.



SMALL FOOD CONE
Item: Q148S0001 Design: White
Size: 198 x 152 Qty/Ctn: 500



LARGE FOOD CONE
Item: Q216S0001 Design: White
Size: 256 x 190 Qty/Ctn: 500

CONTENTS

INDEX

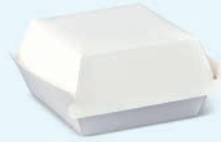
CARTONS & TRAYS

TEL: AUSTRALIA 1300 362 620 / NEW ZEALAND 0800 338 725

CLAMS



- Single side coated board, and breathe holes, ensure food does not get soggy.
- Pre-formed, saving time in assembly.



BURGER CLAM
Item: P095S0001 Design: White
Size: 106 x 106 x 69 Qty/Ctn: 500



EXTRA LARGE BURGER CLAM
Item: P241S0001 Design: White
Size: 110 x 116 x 86 Qty/Ctn: 400



PIZZA CLAM
Item: P330S0001 Design: White
Size: 165 x 165 x 40 Qty/Ctn: 175



LARGE MEAL CLAM
Item: P005S0001 Design: White
Size: 205 x 103 x 76 Qty/Ctn: 250

FOOD TRAYS



- Pre-formed trays save time and allow for instant serving of food.
- Poly-lined trays provide maximum moisture and grease resistance.

* The #3, #4, #5, #6 and #7 Food Trays are sustainable only.



MINI TRAY
Item: P017S0001 Design: White
Size: 55 x 55 x 25 Qty/Ctn: 900



1 EX SMALL
Item: P072S0001 Design: White
Size: 90 x 55 x 36 Qty/Ctn: 1000



2 SMALL
Item: P370S0001 Design: White
Size: 110 x 76 x 40 Qty/Ctn: 1000



3 MEDIUM (POLY-LINED)
Item: P467S0001 Design: White
Size: 140 x 85 x 55 Qty/Ctn: 500



4 LARGE (POLY-LINED)
Item: P035S0001 Design: White
Size: 170 x 96 x 55 Qty/Ctn: 500



5 EX-LARGE (POLY-LINED)
Item: P282S0001 Design: White
Size: 185 x 110 x 80 Qty/Ctn: 400



6 GIANT (POLY-LINED)
Item: P517S0001 Design: White
Size: 240 x 160 x 60 Qty/Ctn: 200



7 SQUARE (POLY-LINED)
Item: P142S0001 Design: White
Size: 95 x 95 x 50 Qty/Ctn: 500



HOT DOG TRAY
Item: P321S0001 Design: White
Size: 190 x 70 x 50 Qty/Ctn: 500

CONTENTS

INDEX

CARTONS & TRAYS

TEL: AUSTRALIA 1300 362 620 / NEW ZEALAND 0800 338 725

SANDWICH WEDGES



- Base loading wedge is easy to assemble and display.
- Fresh-Wedge™ can be sealed in a sandwich machine with a film lid.

* P446S0001 is sustainable only.



ECO BASE LOADING WEDGE
Item: P470S0010 Design: Brown
Size: 121 x 75 x 121 Qty/Ctn: 600



ECO BASE LOADING WEDGE
Item: P470S0001 Design: White
Size: 121 x 75 x 121 Qty/Ctn: 600



FRESH-WEDGE™ BASE
Item: P446S0001 Design: White
Size: 108 x 75 x 108 Qty/Ctn: 500

PAPER PLATES



- Coated material provides protection against grease.
- An environmentally friendly alternative to plastic plates.



6 INCH PLATE
Item: N384S0001 Design: White
Size: 150 Qty/Ctn: 1000



7 INCH PLATE
Item: N144S0001 Design: White
Size: 175 Qty/Ctn: 1000



9 INCH PLATE
Item: N601S0001 Design: White
Size: 230 Qty/Ctn: 1000

SUGARCANE RANGE



- Material: bagasse sugarcane pulp



7" ECO PLATE
Item: N750S0001 Design: White
Diameter: 175mm Qty/Ctn: 1000



9" ECO PLATE
Item: N751S0001 Design: White
Diameter: 230mm Qty/Ctn: 500



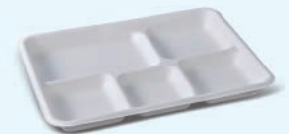
10" ECO PLATE
Item: N752S0001 Design: White
Diameter: 250mm Qty/Ctn: 500



12oz ECO CANE BOWL
Item: N765S0001 Design: White
Diameter: 135mm Qty/Ctn: 1200



18oz ECO CANE BOWL
Item: N766S0001 Design: White
Diameter: 155mm Qty/Ctn: 1200



ECO TRAY - 5 COMPARTMENT
Item: P700S0001 Design: White
Size: 267 x 215 x 24 Qty/Ctn: 500



ECO BURGER CLAM 6x6x3"
Item: P721S0001 Design: White
Size: 152 x 152 x 76 Qty/Ctn: 600



SMALL ECO BOX 9.7x6.3x2.4"
Item: L632S0001 Design: White
Size: 247 x 161 x 61 Qty/Ctn: 500



SMALL ECO BOX - 2 COMPARTMENT 9.7x6.3x2.4"
Item: L731S0001 Design: White
Size: 247 x 161 x 61 Qty/Ctn: 500

CONTENTS

INDEX

CARTONS & TRAYS

TEL: AUSTRALIA 1300 362 620 / NEW ZEALAND 0800 338 725

SUGARCANE RANGE

PRODUCTS CONTINUED



MEDIUM ECO BOX 7.8x8x3"
Item: L732S0001 Design: White
Size: 198 x 203 x 76 Qty/Ctn: 300



**MEDIUM ECO BOX -
3 COMPARTMENT 7.8x8x3"**
Item: L733S0001 Design: White
Size: 198 x 203 x 76 Qty/Ctn: 300



LARGE ECO BOX 9x9x3"
Item: L734S0001 Design: White
Size: 230 x 230 x 76 Qty/Ctn: 200



**LARGE ECO BOX -
3 COMPARTMENT 9x9x3"**
Item: L735S0001 Design: White
Size: 230 x 230 x 76 Qty/Ctn: 250

ENDURA CORRUGATED RANGE



- Strong and sturdy micro-flute design.
- Suitable for hot and greasy foods.



SNACK BOX REGULAR
Item: M274S0010 Design: Brown
Size: 175 x 90 x 85 Qty/Ctn: 200



SNACK BOX LARGE
Item: M275S0010 Design: Brown
Size: 205 x 107 x 78 Qty/Ctn: 200



DINNER BOX
Item: M420S0010 Design: Brown
Size: 178 x 160 x 75 Qty/Ctn: 150



BURGER CLAM
Item: M458S0010 Design: Brown
Size: 105 x 102 x 83 Qty/Ctn: 250



HOT DOG CLAM
Item: M479S0010 Design: Brown
Size: 210 x 70 x 77 Qty/Ctn: 400



FOOD TRAY #1
Item: M393S0010 Design: Brown
Size: 131 x 91 x 50 Qty/Ctn: 500



FOOD TRAY #2
Item: M384S0010 Design: Brown
Size: 178 x 178 x 45 Qty/Ctn: 240



FOOD TRAY #3
Item: M279S0010 Design: Brown
Size: 180 x 134 x 45 Qty/Ctn: 400



FOOD TRAY #4
Item: M437S0010 Design: Brown
Size: 228 x 152 x 45 Qty/Ctn: 250

CONTENTS

INDEX

CARTONS & TRAYS

TEL: AUSTRALIA 1300 362 620 / NEW ZEALAND 0800 338 725

ENDURA CORRUGATED RANGE

PRODUCTS CONTINUED



FOOD TRAY #5
Item: M467S0010 Design: Brown
Size: 255 x 179 x 58 Qty/Ctn: 100



CHIP CUP
Item: M429S0010 Design: Brown
Size: 70 x 45 x 90 Qty/Ctn: 500



SNACK BOX REGULAR
Item: M274S0202 Design: Natural & Tasty
Size: 175 x 90 x 85 Qty/Ctn: 200



SNACK BOX LARGE
Item: M275S0202 Design: Natural & Tasty
Size: 205 x 107 x 78 Qty/Ctn: 200



DINNER BOX
Item: M420S0202 Design: Natural & Tasty
Size: 178 x 160 x 75 Qty/Ctn: 150



BURGER CLAM
Item: M458S0202 Design: Natural & Tasty
Size: 105 x 102 x 83 Qty/Ctn: 250



FOOD TRAY #1
Item: M393S0202 Design: Natural & Tasty
Size: 131 x 91 x 50 Qty/Ctn: 500



FOOD TRAY #2
Item: M384S0202 Design: Natural & Tasty
Size: 178 x 178 x 45 Qty/Ctn: 240



FOOD TRAY #3
Item: M279S0202 Design: Natural & Tasty
Size: 180 x 134 x 45 Qty/Ctn: 400



FOOD TRAY #4
Item: M437S0202 Design: Natural & Tasty
Size: 228 x 152 x 45 Qty/Ctn: 250



FOOD TRAY #5
Item: M467S0202 Design: Natural & Tasty
Size: 255 x 179 x 58 Qty/Ctn: 100



CHIP CUP
Item: M429S0202 Design: Natural & Tasty
Size: 70 x 45 x 90 Qty/Ctn: 500

CONTENTS

INDEX

CARTONS & TRAYS

TEL: AUSTRALIA 1300 362 620 / NEW ZEALAND 0800 338 725

WINDOW PÂTISSERIE RANGE



- Large viewing window to show off your cakes, pastries and muffins.
- Light claycoat on the inside provides protection against grease.

* Enviro statements apply if windows are removed.



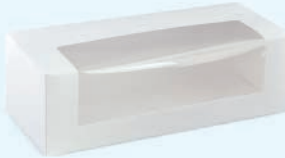
FLAT BOX
Item: Q314S0001 Size: 200 x 150 x 30
Qty/Ctn: 200 Inner Qty: 50



LONG 5" BOX
Item: K506S0001 Size: 130 x 110 x 80
Qty/Ctn: 800 Inner Qty: 100



LONG 7" BOX
Item: K621S0001 Size: 180 x 110 x 80
Qty/Ctn: 400 Inner Qty: 50



LONG 10" BOX
Item: K212S0001 Size: 260 x 110 x 80
Qty/Ctn: 300 Inner Qty: 50



SQUARE 7" BOX
Item: Q093S0001 Size: 180 x 180 x 75
Qty/Ctn: 200 Inner Qty: 50



SQUARE 9" BOX
Item: Q103S0001 Size: 230 x 230 x 75
Qty/Ctn: 200 Inner Qty: 50



SQUARE 9" DEEP BOX
Item: Q404S0001 Size: 240 x 240 x 120
Qty/Ctn: 100 Inner Qty: 50



SQUARE 11" BOX
Item: Q006S0001 Size: 280 x 280 x 100
Qty/Ctn: 100 Inner Qty: 50

CUPCAKE RANGE

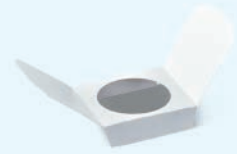


- Each box can be fitted with an insert to hold cupcakes in place.
- Inserts contain finger holes to protect cupcakes when loading and unloading.

* Enviro statements apply if windows are removed. L069S0001 is sustainable only.



26oz WINDOW PAIL
Item: L069S0001 Size: 79 x 66 x 103
Qty/Ctn: 450 Inner Qty: 50



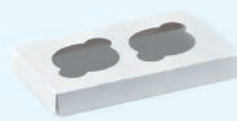
1 CUPCAKE INSERT
Item: Q122S8600 Fits: L069S0001
Size: 222 x 110 Qty/Ctn: 1800
Inner Qty: 225



1 CUPCAKE INSERT (INSIDE BOX)
L069S0001 and Q122S8600 shown together.



LONG 7" BOX
Item: K621S0001 Size: 180 x 110 x 80
Qty/Ctn: 400 Inner Qty: 50



2 CUPCAKE INSERT
Item: Q122S8602 Fits: K621S0001
Size: 215 x 146 Qty/Ctn: 1200
Inner Qty: 200



2 CUPCAKE INSERT (INSIDE BOX)
K621S0001 and Q122S8602 shown together.

CONTENTS

INDEX

CARTONS & TRAYS

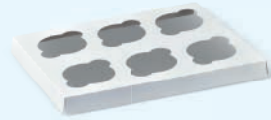
TEL: AUSTRALIA 1300 362 620 / NEW ZEALAND 0800 338 725

CUPCAKE RANGE

PRODUCTS CONTINUED



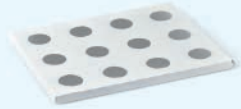
6 CUPCAKE WINDOW BOX
Item: Q746S0001 Size: 255 x 200 x 100
Qty/Ctn: 100 Inner Qty: 50



6 CUPCAKE INSERT
Item: Q122S8604 Fits: Q746S0001
Size: 290 x 236 Qty/Ctn: 600
Inner Qty: 100



6 CUPCAKE INSERT (INSIDE BOX)
Q746S0001 and Q122S8604 shown together.



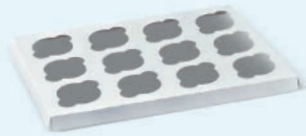
12 MINI INSERT
Item: Q122S8603 Fits: Q746S0001
Size: 270 x 216 Qty/Ctn: 800
Inner Qty: 100



12 MINI INSERT (INSIDE BOX)
Q746S0001 and Q122S8603 shown together.



12 CUPCAKE WINDOW BOX
Item: Q307S0001 Size: 360 x 255 x 100
Qty/Ctn: 80 Inner Qty: 40



12 CUPCAKE INSERT
Item: Q122S8601 Fits: Q307S0001
Size: 396 x 291 Qty/Ctn: 240
Inner Qty: 80



12 CUPCAKE INSERT (INSIDE BOX)
Q307S0001 and Q122S8601 shown together.

ECO CUTLERY



• Material: bioplastic (PLA)



6" ECO KNIFE
Item: Y770S0001 Design: White
Size: 150mm Qty/Ctn: 1000



6.3" Eco Fork
Item: Y771S0001 Design: White
Size: 160mm Qty/Ctn: 1000



5.3" Eco Spoon
Item: Y772S0001 Design: White
Size: 135mm Qty/Ctn: 1000

CONTENTS

INDEX

A hand is holding a small, round tart with a golden-brown crust, a bright yellow filling, and five fresh blueberries on top. The tart is resting on a white, textured napkin. The background is a blurred image of a person's hands clasped together, suggesting a social gathering or event.

NAPKINS

[CONTENTS](#)

[INDEX](#)

NAPKINS

TEL: AUSTRALIA 1300 362 620 / NEW ZEALAND 0800 338 725

LUNCHEON NAPKINS



- Subtle embossing pattern covers entire 1-ply napkin, while 2-ply napkin has embossing only on the edge.
- Ideal for everyday use.

LEGEND



Q FOLD LUNCHEON – 1 PLY
Item: G603S0001 Size: 320 x 320
Qty/Ctn: 4500 Inner Qty: 3000



M FOLD LUNCHEON – 1 PLY
Item: G334S0001 Size: 320 x 320
Qty/Ctn: 3000 Inner Qty: 500



Q FOLD LUNCHEON – 2 PLY
Item: G562S0001 Size: 320 x 320
Qty/Ctn: 3000 Inner Qty: 100



M FOLD LUNCHEON – 2 PLY
Item: G416S0001 Size: 320 x 320
Qty/Ctn: 3000 Inner Qty: 100



Q FOLD LUNCHEON – 1 PLY
Item: G603S0231 Design: i am eco™
Size: 320 x 320 Qty/Ctn: 3000

DINNER NAPKINS



- Large, thick napkin with embossing on the edge.
- Ideal for formal situations and premium presentation.



Q FOLD DINNER – 2 PLY
Item: G462S0001 Size: 400 x 400
Qty/Ctn: 1000 Inner Qty: 100



GT FOLD DINNER – 2 PLY
Item: G158S0001 Size: 400 x 400
Qty/Ctn: 1000 Inner Qty: 100

COCKTAIL NAPKINS



- A small napkin with embossing on the edge.
- Ideal for cocktail food.



Q FOLD COCKTAIL – 2 PLY
Item: G115S0001 Size: 240 x 240
Qty/Ctn: 3500 Inner Qty: 250



- Economical napkin option.
- Fits into standard counter-top dispensers.



C FOLD DISPENSER – 1 PLY
Item: G599S0001 Size: 230 x 220
Qty/Ctn: 5000 Inner Qty: 250

EXACTA NAPKIN



- An interleaved napkin that fits with a range of dispensers (sold separately).
- The dispenser ensures that a customer takes just one napkin rather than several at a time, decreasing usage by up to 30%.



EXACTA NAPKIN - 2 PLY
Item: G982S0001 Design: White
Item: G724S0010 Design: Brown
Size: 230 x 160
Qty/Ctn: 10,000 Inner Qty: 200



SMALL COUNTERTOP DISPENSER
Item: Y971P0081 Design: Black Pearl
Size: 159 x 190 x 156 Capacity: 200



LARGE COUNTERTOP DISPENSER*
Item: Y971P0083 Design: Black Pearl
Size: 184 x 203 x 400 Capacity: 550
*also available in clear colour

CONTENTS

INDEX



GETTING STARTED.
OUR TEAM CAN GUIDE
YOU THROUGH THE
PROCESS OF CHOOSING
THE RIGHT PACKAGING
SOLUTION FOR YOUR
PRODUCT, YOUR
ENVIRONMENT AND
YOUR BUSINESS.

[CONTENTS](#)

[INDEX](#)



HERE, WE'VE INCLUDED THE THREE MAIN STEPS AND SOME OF THE MOST COMMON ISSUES TO CONSIDER.

STEP 1:

MATCHING THE PRODUCT WITH THE PACKAGING

Although it might look simple on the surface, there are actually a lot of different factors to think about when you're packaging a product. The checklist below will help you make sure you consider every option.

Does the packaging support the shelf-life of my product?

Airtight packaging is often needed if products are being stored rather than consumed instantly.

Can the packaging cope with the moisture and grease level of my product?

Packaging with a lining may be needed for wet or oily products.

Will my customers be able to easily open and/or transport the packaging if necessary?

Ease of opening and the ability to consume 'on-the-go' are important considerations for take-away packaging.

Does the product fit well within the packaging?

Oversized packaging can increase costs, and food moving within containers can affect product integrity. Ask for packaging samples to test sizing for your specific products.

Is the packaging safe for food?

All of Detpak's products are made from certified food grade materials and manufactured in plants accredited for food safety and quality consistency (HACCP; BRC, AIB, ISO9001).

Can the packaging support our service goals?

Pre-formed packaging can decrease handling time, while windows allow for pre-packaging of items to increase sales during rush hours.

STEP 2:

SETTING YOUR ENVIRONMENTAL AND SOCIAL GOALS

Use our Environmental Checkpoint system (page 17) to help you to evaluate each packaging item against four key criteria and assess: is the item sustainable, compostable, recyclable or re-usable?

Social responsibility along our supply chain is important to us. When you partner with Detpak, you can be confident about our business conduct and principles. If you would like to contribute to Detpak's social responsibility and sustainability initiatives or join us in supporting local charities, please get in touch with one of our team members.



A one-colour print is cost effective and has great effect.

CONTENTS

INDEX



THERE IS A WIDE RANGE OF BRANDING OPTIONS AVAILABLE – OUR TEAM WILL WORK WITH YOU TO FIND THE BEST BRANDING SOLUTION FOR YOUR BUSINESS.

STEP 3: MAXIMISING EXPOSURE FOR YOUR BUSINESS

Product packaging can help you build your brand and increase business. It is important to choose packaging with a 'look and feel' to match your brand. This may involve simply choosing a stock colour (generic) that fits your image or custom printing your packaging.

STOCK PACKAGING
Many of our products are available in plain colours or subtle stock prints that can be easily worked into the décor of your store. Small touches can make these products your own, like stamps, stickers, ribbons or ties. Stock or generic products are available by the carton, usually with 200–1000 pieces per carton. This means you aren't tied up with loads of stock, taking up room and money.

CUSTOM PRINTING
All of Detpak's products can be custom printed with your design to help you stand out from the crowd. Custom printing is often thought of as an expensive option, but there are many ways to maximise your exposure without breaking the bank.

We often recommend that businesses on a budget start with custom printing just one packaging item from our range. An ideal place to start is a carry bag, as it will generally house all of your other items. They are economical, use minimal space in-store, have a low minimum run (starting at 3000 pieces) and can be used to great effect with a 1-colour print. Carry bags will advertise your business as customers carry them from the store, and are also much more likely to be re-used, extending their lifespan.

Wraps are also a versatile option to add branding to your range. They can be used to line food trays, lunch boxes, pails or serving platters as well as wrapping food. Wraps are very economical, use little storage space and can be easily used in-store and for takeaway items.

**MAKING IT HAPPEN –
GETTING SET FOR CUSTOM
PRINTING**
There are two ways that we can help you get ready for custom printing your packaging. We can:

- Design your artwork for you! Just send us your logo, some examples of how it's been used on your business cards, letterhead or website and a few instructions on what you'd like to achieve. We'll take care of the rest.
- Provide you with a template for any of our packaging items. Your graphic designer or advertising agency can then place your artwork onto the template and send it to us.

Art file format & requirements
Artwork is to be supplied in Adobe Illustrator format and all fonts need to be converted to outline/paths.

A PDF or colour hard copy, including a listing of colours, must also be supplied for reference.

Linked halftone images to be 300 dpi @ 100% size (supplied separately to 'ai' file – do not embed images).

Linked bitmap images to be 600 dpi @ 100% (supplied separately to 'ai' file – do not embed images).

CONTENTS

INDEX



THERE ARE MANY WAYS YOU CAN USE OUR WRAPS INCLUDING FOR PRESENTATION IN-STORE, TO WRAP PRODUCTS FOR TAKEAWAY AND AS AN ALTERNATIVE TO A NAPKIN.

CONTENTS

INDEX

**SMALL TOUCHES
CAN MAKE THESE
PRODUCTS YOUR
OWN, LIKE STAMPS,
STICKERS, RIBBONS
OR TIES.**

[CONTENTS](#)

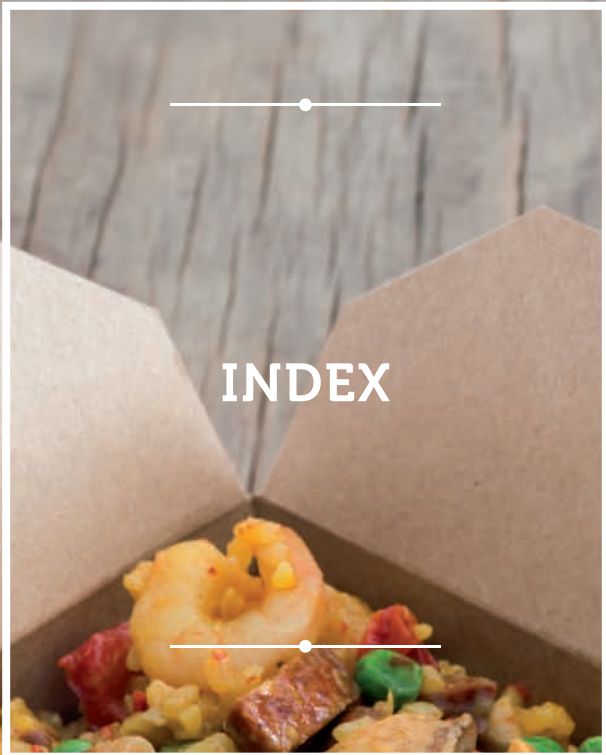
[INDEX](#)



STAMPING YOUR GRAPHICS ONTO OUR PRODUCTS ALLOWS YOU TO CUSTOMISE YOUR PACKAGING EASILY AND COST EFFECTIVELY.

CONTENTS

INDEX



INDEX



CONTENTS

Boss Cup™	23	Greaseproof Flat Bags (2-Ply)	41
Bottle Bags	43	Hot Cup Lids	25
Bread Bags	42	Hot Dog Bags	42
Burger Clams	52	I am eco™ Bowls	27
Burger Wrap	45	I am eco™ Hot Cups	21
Carry Bags	36	I am eco™ Pails	47
Carry Packs	51	I am eco™ Window Retail Bags	36
Checkout Bags	35	Ice Cream Bowls	28
Chicken Bags	41	Ice Cream Bowl Lids	29
Chip Cartons	51	Lunch Boxes	48
Clams	52	Luncheon Napkins	59
Cocktail Napkins	59	Motion Sickness Bags	43
Cold Cups	30	Mushroom Bags	43
Cold Cup Lids	30	Pail-Pak™	49
Cold Cups – PET Clear	30	Paper Plates	53
Cold Cups – PET Clear Lids	31	PET Clear Cold Cups	30
Combo Hot Cup Lids	26	Quick Service Bags	41
Combo Ripple-Wrap™ Hot Cups	23	Retail Bags	36
Combo Single Wall Hot Cups	25	Retail Window Bags	37
Combo Smooth Double Wall Hot Cups	23	Ripple-Wrap™ Hot Cups	22
Cupcake Range	56	Sandwich Wedges	53
Deli-Wrap™	45	Satchel Bags – Brown	40
Dinner Napkins	59	Satchel Bags – White	38
Dispenser Napkins	59	Savoury Bowls	28
Drink Trays	31	Savoury Bowl Lids	29
Eco Cutlery	57	Single Wall Hot Cups	24
Endura Corrugated Range	54	Smooth Double Wall Hot Cups	23
Exacta Napkin	59	Snack Boxes	50
Fish & Chip Boxes	51	Specialty Bags	43
Flat Bags – Brown	39	Sugarcane Range	53
Flat Bags – White	37	Take-Away Boxes	49
Food Cones	51	Take-Away Food Bags	35
Food Pails	47	Uni-Cup Range	27
Food Trays	52	White Bowls	29
Fresh Wrap	45	Window Lunch Boxes	48
Glassine Flat Bags	40	Window Patisserie Range	56
Glassine Satchel Bags	40	Wrappa-Roll™	45



DETPAK SUPPORTS
PEOPLE IN BUSINESS
AROUND THE GLOBE
WITH SUSTAINABLE,
INNOVATIVE AND
WORLD-CLASS
PACKAGING SOLUTIONS.

[CONTENTS](#)

[INDEX](#)



Please scan this code to download an electronic copy of this catalogue, or visit www.detpak.com.



AUSTRALIA 1300 362 620
NEW ZEALAND 0800 338 725
WWW.DETPAK.COM

Detpak