

TRS

Vegetable slicers

Increased productivity, outstanding performance, superior quality and extreme sturdiness.



- ▶ **Compact, powerful** and with **inclined base (20°)** makes loading and unloading operations quick and easy
- ▶ Able to slice, shred, grate and dice up to **550 kg/hour**
- ▶ **Long life** and **silent operation** thanks to the durable stainless steel construction and asynchronous motor
- ▶ **Wide range of stainless steel discs** (205mm diameter) for more than 80 different cuts
- ▶ **Maximum cleanability** due to the ergonomic design with rounded shapes and stainless steel parts
- ▶ **Large hopper** for higher output and processing of large size and unusual shaped vegetables. No need to pre-cut



- ▶ **Large and long vegetable hoppers** integrated in the same design
- ▶ User friendly waterproof control panel with **pulse function** for **precise slicing**
- ▶ **Ergonomic, easy to lift lever:** minimal pressure is required to process vegetables (for right or left hand use)
- ▶ Automatic start/stop function will stop the machine when the lever hopper is lifted and will restart automatically when lowered, to allow **continuous feeding**



Long vegetable hopper



Touch button control



Large round hopper (215 cm²)

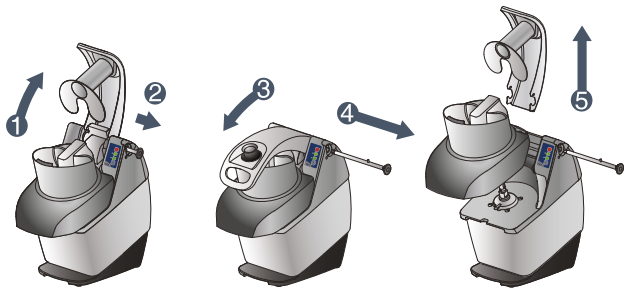
- ▶ Save time and effort: powerful lever remains in upright position so operator can freely use both hands to feed vegetables
- ▶ Variable speed models for more flexibility and precision, speed adjusted to type of cut
- ▶ Asynchronous motor for **silent** operation and **longer life**
- ▶ High discharge zone permits the use of deep GN containers (up to 20 cm)



- ▶ With a few simple movements all parts in contact with food can be removed, without tools, and are **100% dishwasher safe**



- ▶ Safety device protects the operator by stopping the machine in case of misuse



Stainless steel discs with holder included standard

Vegetable slicer TRS

Speed	Phases	Power	RPM
1 speed	1 ph	370 W	340
	1 ph	500 W	340
	3 ph	500 W	340
2 speeds	3 ph	750 W	340-680
Variable	1 ph	500 W	140 to 750

External dimensions (wxdxh): 252x500x502mm

TR210

Vegetable slicers

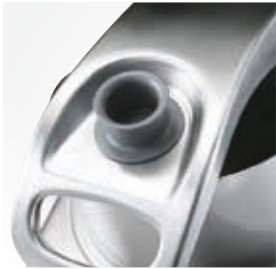
Even faster results to ensure quantity with high quality.
Beyond great performance



- ▶ Prepare from **100 to 1000** covers/day up to **2100 kg/h**
- ▶ Slice, dice, shred, cut and julienne in record time



- ▶ **Easy loading** of long and large vegetables with the stainless steel hoppers
- ▶ **Waterproof** and **easy to clean** control panel (IP55)
- ▶ **Precise cutting** guaranteed with "Pulse" function
- ▶ Stainless steel automatic hopper to cut large quantities of regular shaped fruit and vegetables
- ▶ Asynchronous motor for **silent** operation and **longer life**



Stainless steel manual hopper (optional)



Stainless steel long vegetable hopper (optional)



- ▶ **Myriad shapes** for your original presentations
- ▶ **Wide range of stainless steel discs** (205mm diameter) for more than 80 different cuts
- ▶ **Safe storage** of your discs offered by wall-mounted disc holders
- ▶ **Incly System** 20° angled base (for use with manual hopper)

- ▶ **Excellent hygiene** is ensured for all dishwasher-friendly cutting components



- ▶ **Guaranteed ergonomics** and flexibility with the new stainless steel trolley



TR260

Vegetable slicers

A universal slicing machine with a wide variety of accessories to create stylish and imaginative preparations for the largest culinary events.



TR260
with optional lever hopper
and mobile stand

- ▶ **Slice up to 2500 kg/h** thanks to automatic hopper, large cutting discs and powerful speed
- ▶ Slow blade rotation for **perfect slicing**
- ▶ 300 mm diameter discs guarantee high productivity
- ▶ Safety device protects the operator by stopping the machine in case of misuse
- ▶ **Maximum versatility.** Combine motor base with a variety of optional accessories to suit your needs

- ▶ User friendly **waterproof control panel** with **pulse function** and speed selector (only on 2 speed models) for **precise slicing**
- ▶ Asynchronous motor for **silent operation** and **longer life**



A vast range of accessories



- ▶ Automatic hopper for continuous operation and productivity
- ▶ For a single load of 6 kg of vegetables (max.110 mm diam.)



- ▶ Lever operated hopper
- ▶ Vertical motion of the handle for improved ergonomics and space saving



- ▶ Long vegetable hopper with 3 tubes (diam. 50 to 70 mm)



- ▶ Long vegetable accessory for lever operated hopper



- ▶ Cabbage hopper for slicing an entire cabbage at once (max. 250 mm diam.). To be combined with cabbage discs



- ▶ Stainless steel mobile stand. Disc rack (optional)



- ▶ Stainless steel trolley for 2/1 GN containers



- ▶ Wide selection of slicing discs (Ø 300 mm)

Vegetable slicer TR260

Speed	Phases	Power	RPM
1 speed	1 ph	1500 W	330
2 speeds	3 ph	2000 W	330-660

External dimensions (wxdxh): 750x380x460 mm